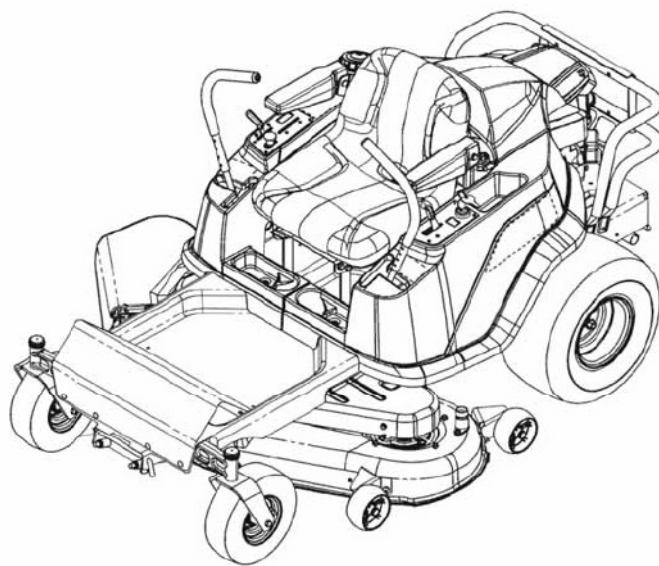




# Parts Manual



## 2000 Series Zero Turn Rider

### Products

Mfg. No.	Description
2691048-00	ETZ20420, 20HP Rider w/42" Mower (Export)
2691048-01	ETZ20420, 20HP Rider w/42" Mower (Export)
2691048-02	ETZ20420, 20HP Rider w/42" Mower (Export)
2691048-03	ETZ20420, 20HP Rider w/42" Mower (Export)
2691048-04	ETZ20420, 20HP Rider w/42" Mower (Export)

Manual Part No. 1753975  
Revision E  
Rev. Date: 8/25/2015

Not for  
Reproduction

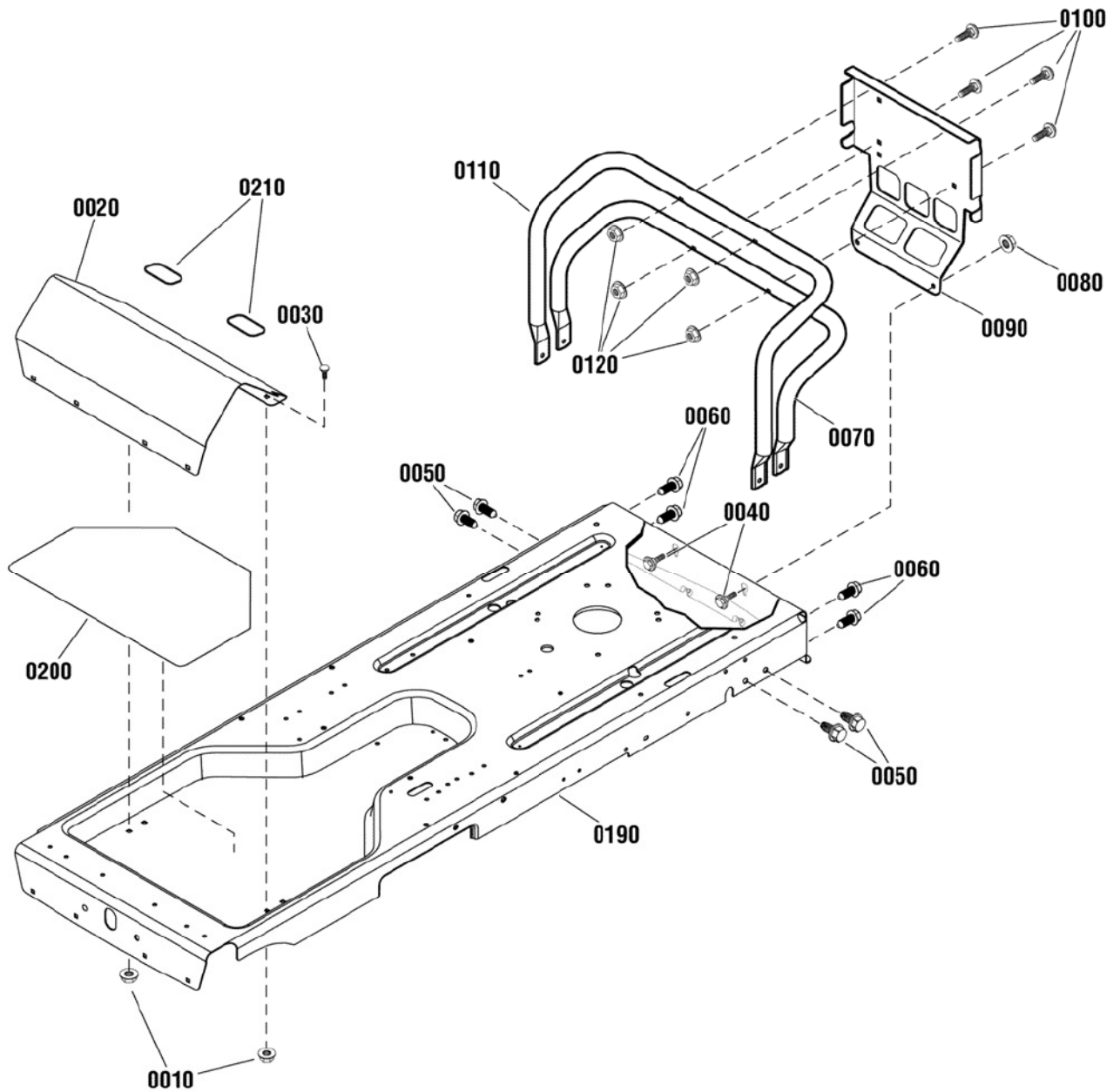
<b>PRODUCT COMPONENTS</b>	<b>PAGES</b>
Frame Group .....	4
Frame Group .....	6
Engine Group - 20HP Briggs & Stratton .....	8
Engine Group, 7200 Series .....	10
Transmission Group .....	12
Transmission Group .....	14
Front Axle Group .....	16
Controls Group .....	18
Electrical Group .....	20
Seat, Body & Fuel Tank Group .....	22
Parking Brake Group .....	24
Lift Group .....	26
Wheel & Tire Group .....	30
Decal Group .....	32
Decals Group .....	34
French Guard Group - Frame & Deck .....	36
42" Mower Deck - Clutch & Support Group .....	38
42" Mower Deck - Housing, Arbor & Blade Group .....	40
<b>Torque Specification Chart</b> .....	<b>Inside Back Cover</b>

Not for  
Reproduction

## Frame Group

NOTE: Unless noted otherwise,  
use the standard hardware torque  
specification chart.

2990185



The above parts group applies to the following Mfg. Nos.:

2691048-00 - ETZ20420

2691048-01 - ETZ20420

### Frame Group

REF NO	PART NO.	QTY.	DESCRIPTION
0010	7091601	2	NUT, Hex Flange Lock, 5/16-18, G5
0020	7300140C	1	FOOTREST
0030	7090799	2	BOLT, Carriage, Short Neck, 5/16-18 x 5/8, G5
0040	1716654	2	BOLT, Shoulder, 5/16-18 x .89 (3/4 Thread Length)
0050	1664847SM	4	SCREW, Hex Washer Head, Self Tap, 5/16-18 x 3/4
0060	1664847SM	4	SCREW, Hex Washer Head, Taptite, 5/16-18 x 3/4
0070	1753517BM	1	TUBE, Bumper, Lower
0080	1927557	2	NUT, Hex Flange, Whiz Lock, 5/16-18
0090	1753572C	1	PLATE, Brand
0100	1931338	4	BOLT, Carriage, Short Neck, 5/16-18 x 1-3/4, G5
0110	7301123BM	1	TUBE, Bumper, Upper
0120	1960686	4	NUT, Hex Flange, ESNA, 5/16-18
0190	7301073C	1	FRAME
0200	7103830	1	MAT, Floor Pan
0210	7104571	2	PAD, Foot

Not for  
Reproduction

### Footnotes

The above parts group applies to the following Mfg. Nos.:

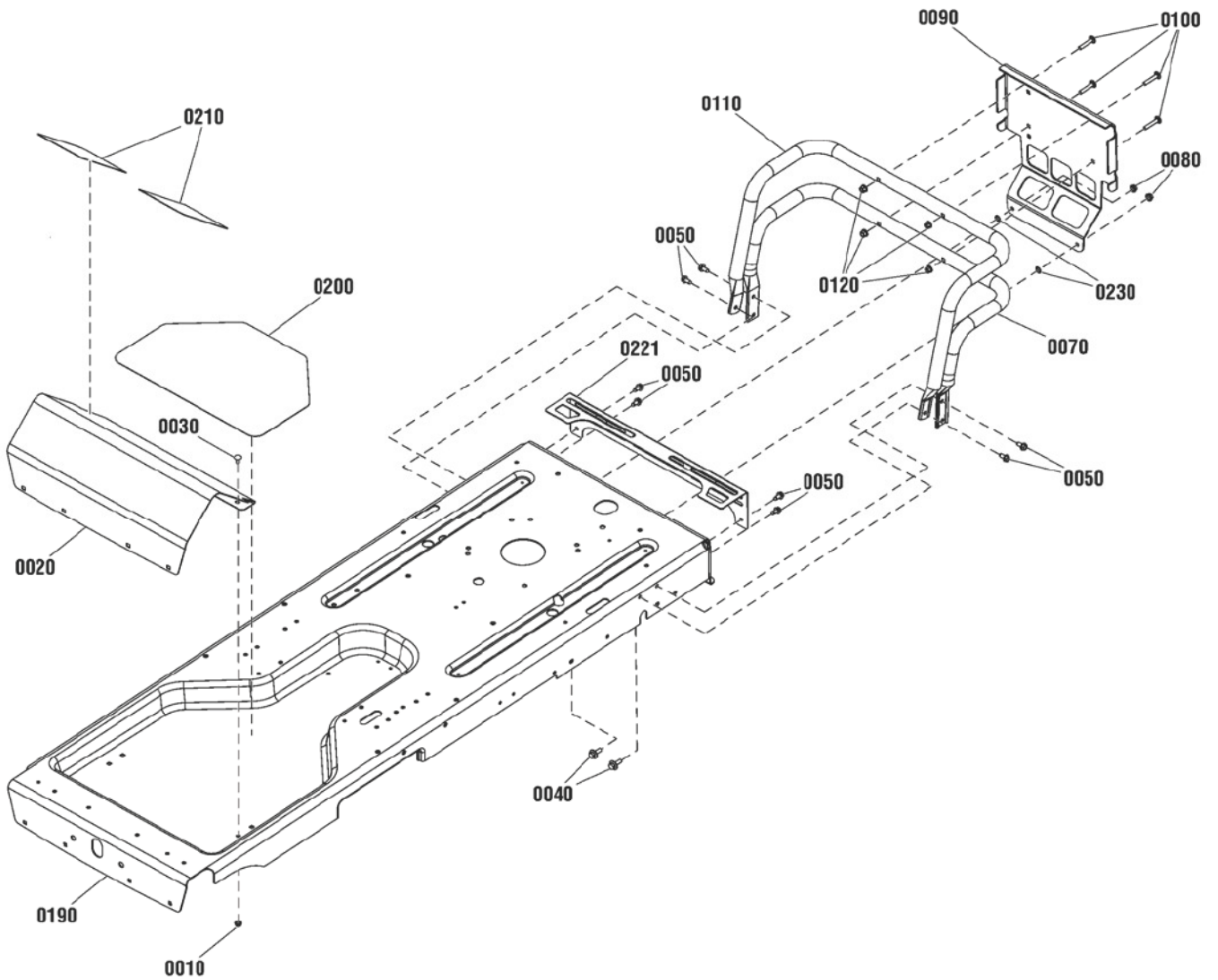
2691048-00 - ETZ20420

2691048-01 - ETZ20420

## Frame Group

NOTE: Unless noted otherwise,  
use the standard hardware torque  
specification chart.

2991342\_2991343



The above parts group applies to the following Mfg. Nos.:

2691048-02 - ETZ20420

2691048-03 - ETZ20420

2691048-04 - ETZ20420

## Frame Group

REF NO	PART NO.	QTY.	DESCRIPTION
0010	703409	2	NUT, 5/16-18, Hex Flange Lock, GR 5
0020	7300140CYP	1	FOOTREST , Orange
0030	704065	2	BOLT, 5/16-18 X 0.875, Carriage Short Neck, ZC/CL
0040	1716654SM	2	BOLT, 5/16-18 X .75, .50 Shoulder G5 YEL
0050	703228	8	SCREW, Hex Washer Head, Thread Roll, 5/16-18 x 3/4
0070	1753517BMYP	1	BUMPER, Lower Tube
0080	703330	2	NUT, 5/16-18, Hex Flange Whiz-Lock
0090	1753572CYP	1	PLATE, Brand - Simplicity Orange (52" Models Only)
0100	703175	4	BOLT, 5/16-18 x 1-3/4 Round Head Short Square Neck, GR 5, Zinc/Clear (52" Models Only)
0110	7301123BMYP	1	TUBE, Bumper, Upper (52" Models Only)
0120	703115	4	NUT, Nylock Flange, 5/16-18, GR F (52" Models Only)
0190	----	1	FRAME (Not a serviceable part)
0200	7103830YP	1	MAT, Floor Pan
0210	7104571YP	2	PAD, Foot, Wide
0221	1757996BMYP	1	SHIELD, Heat (Used on serial Nos. after 201676697)
0230	703297	2	RETAINER, 5/16, GR5 Zinc/Clear

Not for  
Reproduction

## Footnotes

The above parts group applies to the following Mfg. Nos.:

2691048-02 - ETZ20420

2691048-03 - ETZ20420

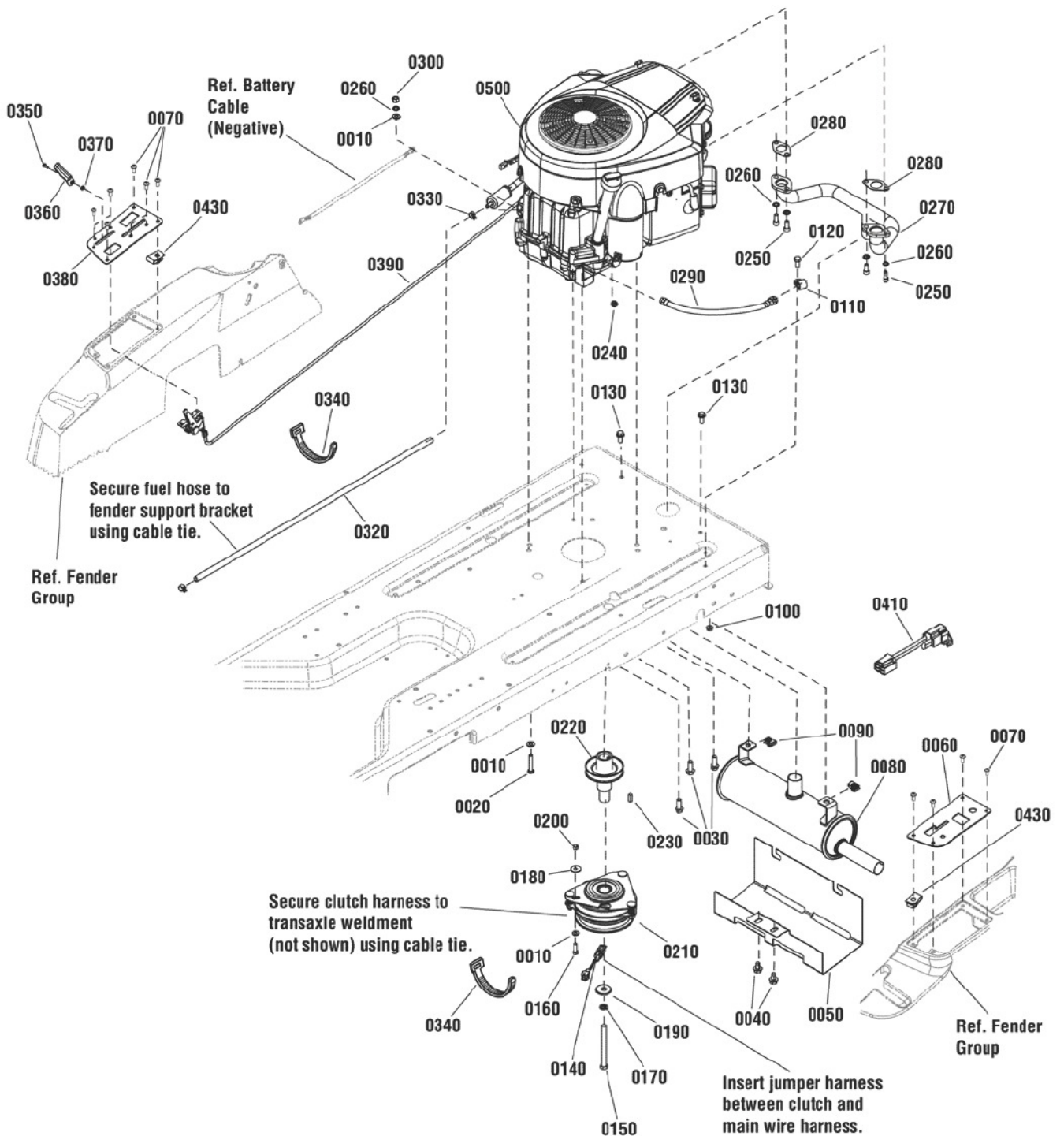
2691048-04 - ETZ20420



## Engine Group - 20HP Briggs & Stratton

2990285

NOTE: Unless noted otherwise,  
use the standard hardware torque  
specification chart.



The above parts group applies to the following Mfg. Nos.:

2691048-00 - ETZ20420

2691048-01 - ETZ20420

2691048-02 - ETZ20420



## Engine Group - 20HP Briggs & Stratton

REF NO	PART NO.	QTY.	DESCRIPTION
0010	7090188	3	WASHER, Flat, 0.34 ID x 5/8 OD
0020	7091908	1	CAPSCREW, Hex Head, 5/16-18 x 1-3/4, G5
0030	7090324	3	SCREW, Hex Washer Head, Self Tap, 3/8-16 x 1
0040	7091198	2	SCREW, Hex Washer Head, Self Tap, 3/8-16 x 5/8
0050	7301083BM	1	HEATSHIELD, Muffler
0060	7301084BM	1	PANEL, Control, LH
0070	7090999	12	SCREW, Pan Head Torx, 1/4-20 x 5/8
0080	7103411	1	MUFFLER
0090	1935255	2	NUT, Speed, Lug Type, 5/16-18
0100	7091601	1	NUT, Hex Flange Lock, 5/16-18, G5
0110	7900020	1	CLIP, Harness, 5/8
0120	1921332SM	1	CAPSCREW, Hex Head, 5/16-18 x 3/4, G5
0130	1930591	2	SCREW, Hex Flange, Whiz Lock, 5/16-18 x 3/4
0140	1737462	1	HARNESS, Jumper, 4"
0150	7092130	1	CAPSCREW, Hex Head, 7/16-20 x 4-1/2, G5
0160	7091904	1	CAPSCREW, Hex Head, 5/16-18 x 7/8, G5
0170	7091301	1	WASHER, Spring Lock, .44 ID 5X.3/4 OD
0180	7011763	1	WASHER, Fender, 5/16
0190	7029138	1	WASHER, Flat, .468 ID x 1-1/2 OD
0200	7091575	1	NUT, Hex Center Lock, 5/16-18, G5
0210	1717664	1	CLUTCH, Electric, Ogura
0220	7043343	1	PULLEY, Engine
0230	7016755	1	KEY, Square, 1/4 x 3/4
0240	7091584	1	NUT, Hex Flange Lock, 1/4-20
0250	7091738	4	CAPSCREW, Socket Head, 5/16-18 x 3/4, G8
0260	7091315	5	WASHER, Spring Lock, 5/16 ID x 1/2 OD
0270	7103414	1	MANIFOLD
0280	1731214	2	GASKET, Exhaust
0290	1726498	1	HOSE, Oil Drain
0300	7091511SM	1	NUT, Hex, 5/16-18, G5
0320	7200140	1	HOSE, Fuel, 1/4" x 32"
0330	7029900	2	CLAMP, Fuel Hose
0340	7012080	3	CABLE TIE, 7"
0350	7091017	1	SCREW, Fillister Head, Cross Recessed, #8-32 x 3/8, G2
0360	7103888	1	KNOB, Throttle, Red
0370	7091018	1	NUT, Hex, #8C, G2B
0380	7301093BM	1	PANEL, Control, RH
0390	7103771	1	THROTTLE ASSEMBLY
0410	1734025	1	WIRES & CONNECTORS ASSEMBLY, Jumper
0430	7023295	4	U-NUT, 1/4-20
0500	406777-0172-B1	1	* ENGINE, 20HP Briggs & Stratton, Intek (Engine Model: 406777-0172-B1)
0500	406777-0173-B1	1	* ENGINE, 20HP Briggs & Stratton, Intek (Engine Model: 406777-0173-B1)

### Footnotes

Note:\* To verify your specific engine model, please reference the ID Tag located on your engine. See your local Briggs & Stratton distributor for parts and service.

The above parts group applies to the following Mfg. Nos.:

2691048-00 - ETZ20420

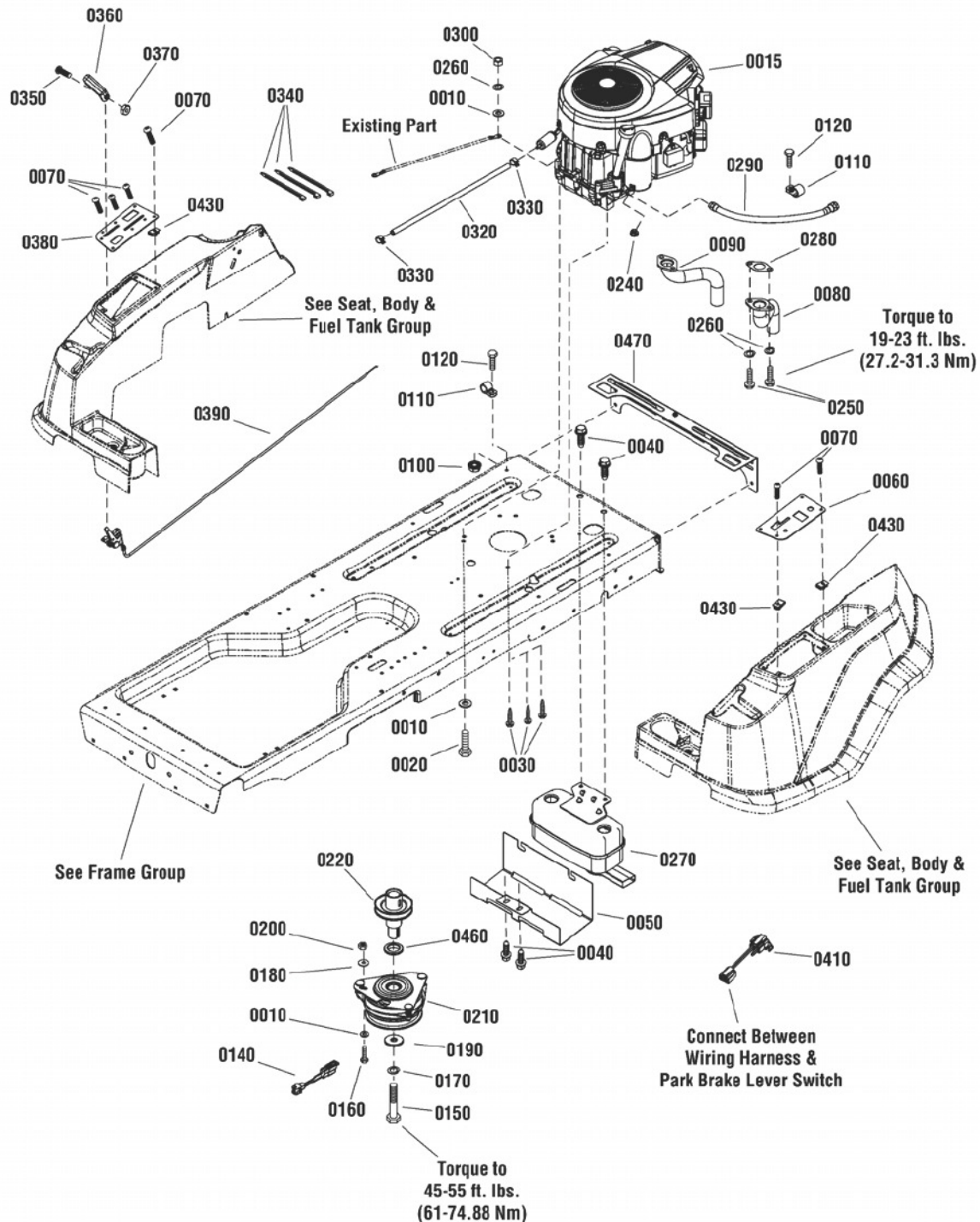
2691048-01 - ETZ20420

2691048-02 - ETZ20420

## Engine Group, 7200 Series

NOTE: Unless noted otherwise,  
use the standard hardware torque  
specification chart.

2991494



The above parts group applies to the following Mfg. Nos.:

2691048-03 - ETZ20420

2691048-04 - ETZ20420

## Engine Group, 7200 Series

REF NO	PART NO.	QTY.	DESCRIPTION
0010	703350	3	WASHER, 5/16, Flat SAE, Zinc/Clear
0015	40R777-0010-B1	1	* ENGINE, 20HP B&S Twin Cyl. Intek EXP 7200 Series Mod. 40R777-0010-B1
0020	704288	1	SCREW, 5/16-18 x 1-3/4 Hex Head Cap, GR 5 YZ
0030	704000	3	SCREW, 3/8-16 X 1.0, Hex Washer Self-Tap, ZC/CL
0040	7091198SM	4	SCREW, 3/8-16 x 5/8 Hex Washer Self-Tap
0050	706106	1	SHIELD, Muffler
0060	7301084BMYP	1	PANEL, Control, LH
0070	703953	12	SCREW, 1/4-20 x 5/8 Pan Head Self-Tap (Torx), BP
0080	1756684YP	1	PIPE, Exhaust, LH (B&S Twin)
0090	1756685YP	1	PIPE, Exhaust, RH (B&S Twin)
0100	703409	1	NUT, 5/16-18, Serated Lock Flange, GR5, Zinc/Clear
0110	7900020SM	1	CLIP, Harness, 5/8"
0120	704287	1	SCREW, 5/16-18 x 3/4 Hex Head Cap, GR 5, YZ
0140	1737462YP	1	HARNESS, Jumper 4 Long
0150	7092130SM	1	SCREW, 7/16-20 x 4-1/2 Hex Head Cap, GR 5, YZ
0160	703585	1	SCREW, 5/16-18 x 1 Hex Head Cap, GR 5, Zinc/Clear
0170	704007	1	WASHER, 7/16, Split-Lock, Zinc/Clear
0180	7011763SM	1	WASHER, 5/16 I.D. 1 O.D. Fender
0190	704053	1	WASHER, .468 ID X 1.5 OD X .19 THK, Special, Zinc/Clear
0200	703164	1	NUT, 5/16-18, Hex Center Lock, GRB, Zinc/Clear
0210	1757359YP	1	CLUTCH, Ogura, 1" ID, Integrated Key
0220	7043343SM	1	PULLEY, Engine, 3.5 OD, 1 ID, 4.92 Tall
0240	703233	1	NUT, 1/4-20 Hex Flange Lock, GR 5, Zinc/Clear
0250	7091738SM	4	SCREW, 5/16-18 x 3/4 Allen Socket Head, GR 8, BZ
0260	703116	5	WASHER, 5/16 Split Lock, YZ
0270	1756693YP	1	ASSEMBLY, Muffler , Extended Deflector
0280	1731214SM	2	GASKET, Exhaust (273485)
0290	1726498SM	1	HOSE, Oil Drain, .375 ID 16.5 L
0300	703465	1	NUT, 5/16-18, GRB, Zinc/Clear
0320	7200140YP	1	HOSE, Fuel, 1/4 x 32"
0330	7029900SM	2	CLAMP, .490 X .31, Fuel Hose
0340	703586	3	TIE, 7, Self Locking
0350	7091017YP	1	SCREW, #8-32 x 3/8" Cross Recess Filister Head, GR
0360	7103888YP	1	KNOB, Throttle, Red
0370	703460	1	NUT, #8-32, HEX, ZINC/CLEAR
0380	7301093BMYP	1	PANEL, Control, RH
0390	7103771YP	1	THROTTLE ASSEMBLY, Choke-A-Matic, B&S
0410	1734025SM	1	WIRES & CONNECTORS ASSEMBLY, Jumper, 3.0 LG
0430	705876	4	NUT, 1/4-20, .025/.150, Speed, Lug Type.025/.150
0460	7029137YP	1	WASHER, 1.010 X 1.312 X .125, Flat, YZ
0470	1757996BMYP	1	SHIELD, Heat

### Footnotes

NOTE: \* Purchase engine parts from engine manufacturer dealer.

The above parts group applies to the following Mfg. Nos.:

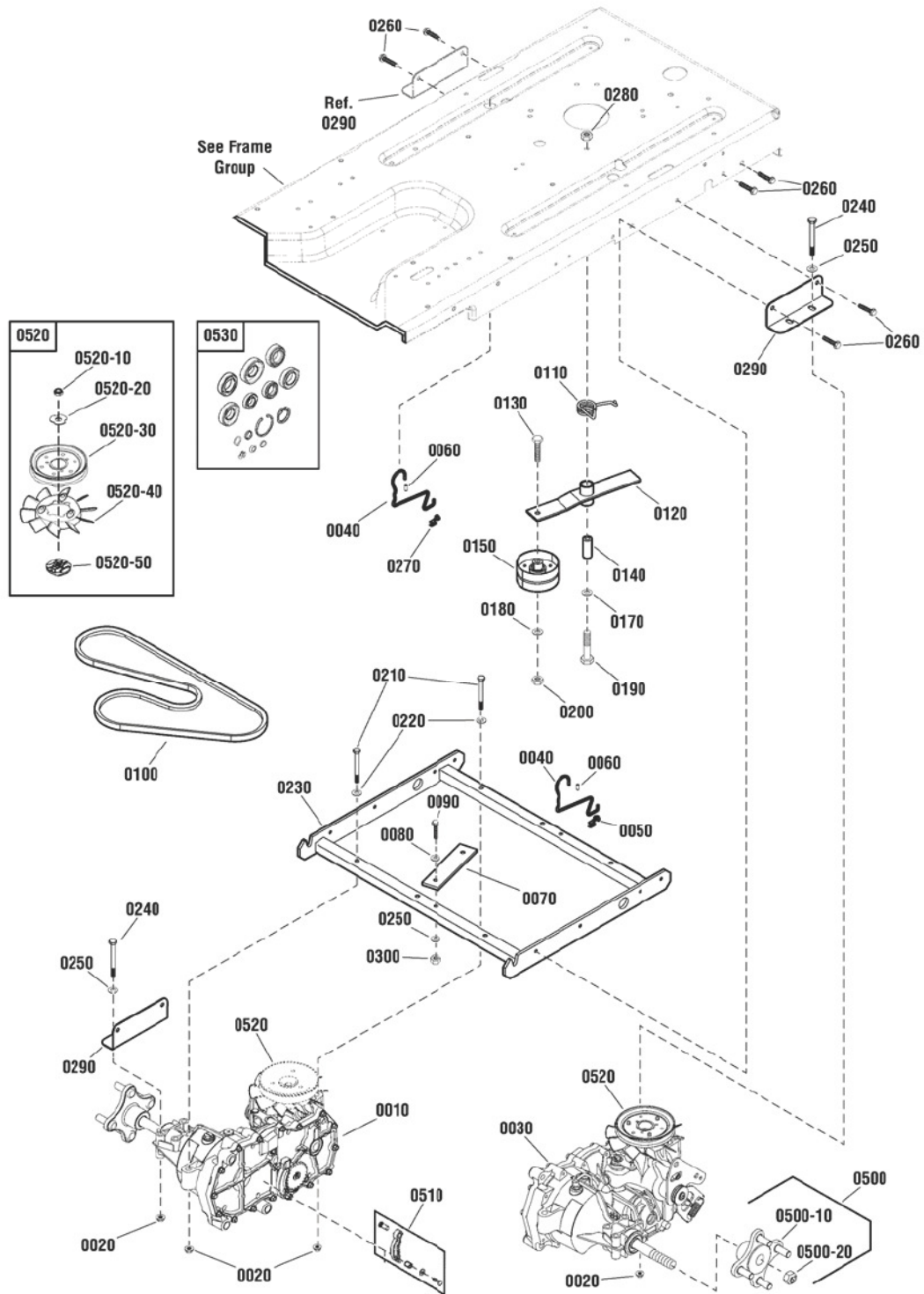
2691048-03 - ETZ20420

2691048-04 - ETZ20420

# Transmission Group

NOTE: Unless noted otherwise, use the standard hardware torque specification chart.

2990137



The above parts group applies to the following Mfg. Nos.:

- 2691048-00 - ETZ20420
- 2691048-01 - ETZ20420
- 2691048-02 - ETZ20420



## Transmission Group

REF NO	PART NO.	QTY.	DESCRIPTION
0010	7104657YP	1	TRANSAXLE, Hydro Gear, RH
0020	015X88MA	8	NUT, Hex Flange, Center Lock, 5/16-18
0030	7104656YP	1	TRANSAXLE, Hydro Gear, LH
0040	7103512YP	2	ROD, Roll Release
0050	1725550SM	1	CLIP, Rod End Clevis, LH (for 3/16 Dia. Rod)
0060	7103537YP	2	CAP, Vinyl
0070	7104674YP	1	RUBBER, Anti-Rotation
0080	7011763SM	1	WASHER, Fender, 5/16
0090	7091908YP	1	CAPSCREW, Hex Head, 5/16-18 x 1-3/4, G5
0100	7100102SM	1	V-BELT, Hydro Drive (HA section, 58.00" effective length)
0110	7044760SM	1	SPRING, Torsion, RH Wind
0120	7400208BMYP	1	IDLER, Hydro
0130	7091305SM	1	CAPSCREW, Hex Head, 3/8-16 x 2, G5
0140	7200034SM	1	SPACER, Hydro Idler
0150	7100103SM	1	IDLER, Backside, 3-1/7 OD x .391 ID x 1-5/8"
0170	7091587SM	1	WASHER, Flat, 1/2
0180	7090122YP	1	WASHER, Flat, 3/8
0190	7091218SM	1	CAPSCREW, Hex Head, 1/2-13 x 2-1/2, G5
0200	7091585SM	1	NUT, Hex Center Lock, 3/8-16, G5
0210	7091830SM	4	CAPSCREW, Hex Head, 5/16-18 x 3, G5
0220	7015686SM	4	WASHER, Shim, 5/16 ID x 3/4 OD
0230	7400288BMYP	1	SUPPORT, Transaxle
0240	7091944SM	4	CAPSCREW, Hex Head, 5/16-18 x 2-3/4, G5
0250	7090188SM	5	WASHER, Flat, 0.34 ID x 5/8 OD
0260	1664847SM	8	SCREW, Hex Washer Head, Self Tap, 5/16-18 x 3/4
0270	1717024SM	1	CLIP, Rod End Clevis, RH (for 3/16 Dia. Rod)
0280	703894	1	NUT, Hex Center Lock, 1/2-13, G5
0290	7300000BMYP	2	BRACKET, Transaxle Support
0300	7091575SM	1	NUT, Hex Center Lock, 5/16-18, G5
0500	7600158YP	1	KIT, Hub Replacement (Includes Ref. 0500-10 & 0500-20)
0500-10	----	1	HUB, EZT Transmission
0500-20	----	1	NUT, EZT Transmission
0510	1728075SM	1	ASSEMBLY, Parking Brake Arm, Transmission
0520	7600157YP	1	KIT, Fan & Pulley, EZT (Includes Ref. 0520-10, 0510-20, 0520-30, 0510-40 & 0520-50)
0520-10	----	1	NUT, Hex Jam, 1/2-20
0520-20	----	1	WASHER, Slotted
0520-30	----	1	PULLEY, Transmission, 4-1/2"
0520-40	----	1	FAN, Transmission, 6"
0520-50	----	1	HUB, Pulley
0530	1728060SM	1	KIT, Hydro Seal (Includes all parts shown in box)

### Footnotes

The above parts group applies to the following Mfg. Nos.:

2691048-00 - ETZ20420

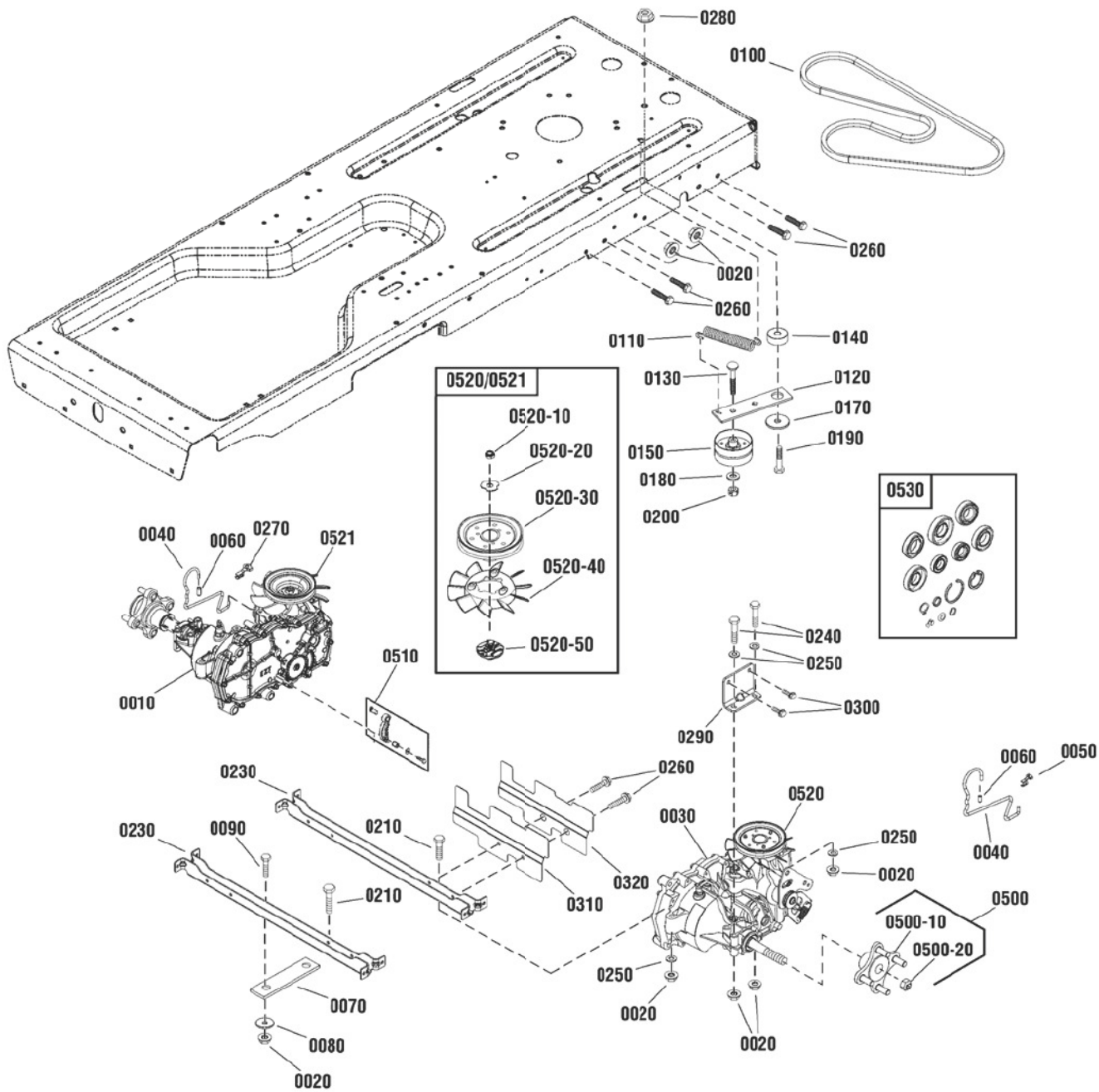
2691048-01 - ETZ20420

2691048-02 - ETZ20420

# Transmission Group

NOTE: Unless noted otherwise,  
use the standard hardware torque  
specification chart.

2991340



The above parts group applies to the following Mfg. Nos.:

- 2691048-02 - ETZ20420
- 2691048-03 - ETZ20420
- 2691048-04 - ETZ20420

## Transmission Group

REF NO	PART NO.	QTY.	DESCRIPTION
0010	1756626YP	1	TRANSAXLE, RH EZT, Hydro-Gear ZC-DUBB-2ADC-1PPX
0020	704067	13	NUT, 5/16-18, Hex Flanged Center Lock, ZC/CL
0030	7104656YP	1	TRANSAXLE, LH EZT, Hydro-Gear ZC-AUBB-2ADB-1DBX
0040	7103512YP	2	ROD, Roll Release
0050	1725550SM	1	CLIP, Rod End Clevis LH (for .188 Dia. Rod)
0060	7103537YP	2	CAP, Vinyl
0070	7104674YP	1	RUBBER, Anti-Rotation
0080	7011763SM	1	WASHER, 5/16" I.D. 1" O.D. Fender
0090	703585	1	SCREW, 5/16-18 x 1 Hex Head Cap, GR 5, Zinc/Clear
0100	7100102SM	1	V-BELT, 58" EL, Hydro Drive
0110	1756635YP	1	SPRING, 4.25", .65" OD, 180 Offset Hooks, Black
0120	1756634BMYP	1	ARM, Transaxle Idler
0130	704278	1	BOLT, 3/8-16X2 GR5 YZ, Carriage
0140	1756633YP	1	SPACER, Idler, 1.75" OD, .515" ID, 1" Shoulder, .89" Thk
0150	7100103SM	1	IDLER, 3.25 OD X .391 ID X 1.63 , Backside
0170	704668	1	WASHER, .505 ID X 2.0 OD X .190 Thk, Flat, ZC/CL
0180	703590	1	WASHER, 3/8 (.406 X .816 X .65), Flat, Zinc/Clear
0190	704669	1	SCREW, 1/2-13 X 1.75, GR5, Hex Head, Zinc/Clear
0200	703347	1	NUT, 3/8-16, Hex Center-Lock, GR B, Zinc/Clear
0210	703177	4	SCREW, 5/16-18 X 2.25, GR5, Zinc/Clear, Hex Head
0230	1756569BMYP	2	BRACKET, Transaxle Mounting
0240	703869	4	SCREW, 3/8-16 X 2.75, Hex Head Cap, G5, Zinc/Clear
0250	703350	8	WASHER, 5/16, Flat SAE, Zinc/Clear
0260	703228	10	SCREW, 5/16-18 X .750, Washer Head Taptite, Zinc/Clear
0270	1717024SM	1	CLIP, Rod End Clevis RH (for .188 Dia. Rod)
0280	1930644SM	1	NUT, 1/2-13 Hex Flange Two-Way Lock Black
0290	1756690BMYP	2	BRACKET, Outer Transaxle Mount
0300	703823	4	BOLT, 5/16-18 x 5/8 Hex Flange lock, GR 5, YZ
0310	1757514BMYP	1	SHIELD, Transaxle Heat
0320	1757557YP	1	SHIELD, Heat Insulation
0500	7600158YP	1	KIT, Hub Replacement (Includes Ref. 0500-10 & 0500-20)
0500-10	----	1	HUB, EZT Transmission
0500-20	----	1	NUT, EZT Transmission
0510	1728075SM	1	ASSEMBLY, Parking Brake Arm, Transmission
0520	7600157YP	1	KIT, Fan & Pulley, EZT, LH (Includes Ref. 0520-10, 0520-20, 0520-30, 0520-40, 0520-50)
0521	1687832YP	1	KIT, Fan & Pulley, EZT, RH (Includes Ref. 0520-10, 0520-20, 0520-30, 0520-40, 0520-50)
0520-10	----	1	NUT, Hex Jam, 1/2-20
0520-20	----	1	WASHER, Slotted
0520-30	----	1	PULLEY, Transmission, 4-1/2"
0520-40	----	1	FAN, Transmission
0520-50	----	1	HUB, Pulley
0530	1728060SM	1	KIT, Hydro Seal (Includes all parts shown in box)

### Footnotes

The above parts group applies to the following Mfg. Nos.:

2691048-02 - ETZ20420

2691048-03 - ETZ20420

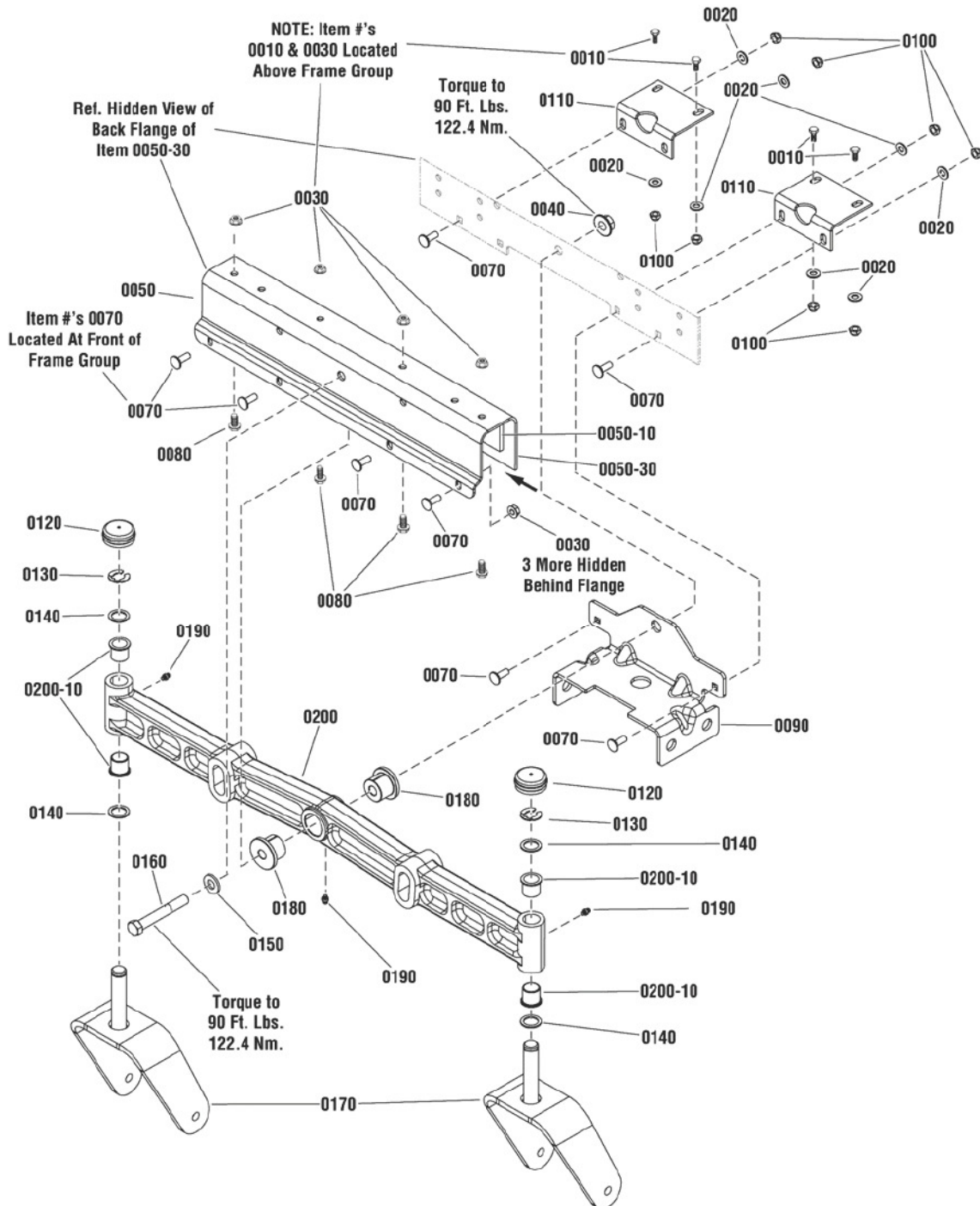
2691048-04 - ETZ20420



## Front Axle Group

2990149

NOTE: Unless noted otherwise, use the standard hardware torque specification chart.



The above parts group applies to the following Mfg. Nos.:

- 2691048-00 - ETZ20420
- 2691048-01 - ETZ20420
- 2691048-02 - ETZ20420
- 2691048-03 - ETZ20420
- 2691048-04 - ETZ20420

## Front Axle Group

REF NO	PART NO.	QTY.	DESCRIPTION
0010	1921332SM	4	SCREW, 5/16-18 x 3/4 Hex Head Cap, GR 5
0020	703350	8	WASHER, 5/16 Flat
0030	703409	8	NUT, 5/16-18, Hex Flange Lock, GR 5
0040	1930644SM	1	NUT, 1/2-13 Hex Flange Two-Way Lock
0050	-----	1	ASSEMBLY, Axle Bracket (Includes Item #'s 0050-10 & 0050-30) (Order individual parts)
0050-10	7103773YP	2	PLATE, Friction, Adhesive Backed
0050-30	7301076BMYP	1	BRACKET, Axle
0070	705065	10	BOLT, 5/16-18 x 7/8 Round Head Short Square Neck, GR 5
0080	703823	4	BOLT, 5/16-18 x 5/8 Hex Flange lock, GR 5
0090	7301096BMYP	1	BRACKET, Hanger, Front, 46 / 52
0100	7091706SM	8	NUT, 5/16-18 Hex Top Lock, GR B
0110	7300004BMYP	2	BRACKET, Axle Support
0120	1734135SM	2	HUB CAP, 1.481 I.D x .62 Long
0130	1611710SM	2	RING, Klipring External for .750 Dia.
0140	1960160SM	4	WASHER, 0.750 ID x 1.60 OD x .05 Thick
0150	704123	1	WASHER, 1/2 Flat
0160	7091558SM	1	SCREW, 1/2-13 x 3-1/2 Hex Head Cap
0170	1733448BMYP	2	CASTER ASSEMBLY
0180	7103454YP	2	BUSHING, Axle Pivot
0190	1704314SM	3	LUBE FITTING, 3/16 Press Fit
0200	1733426YP	1	ASSEMBLY, Front Axle (Includes Item #'s 0190 & 0200-10)
0200-10	2176440SM	4	BUSHING, .765 ID, .787 OD, .81 Tall, 1.07 OD Flange

Not for  
Reproduction

## Footnotes

The above parts group applies to the following Mfg. Nos.:

2691048-00 - ETZ20420

2691048-01 - ETZ20420

2691048-02 - ETZ20420

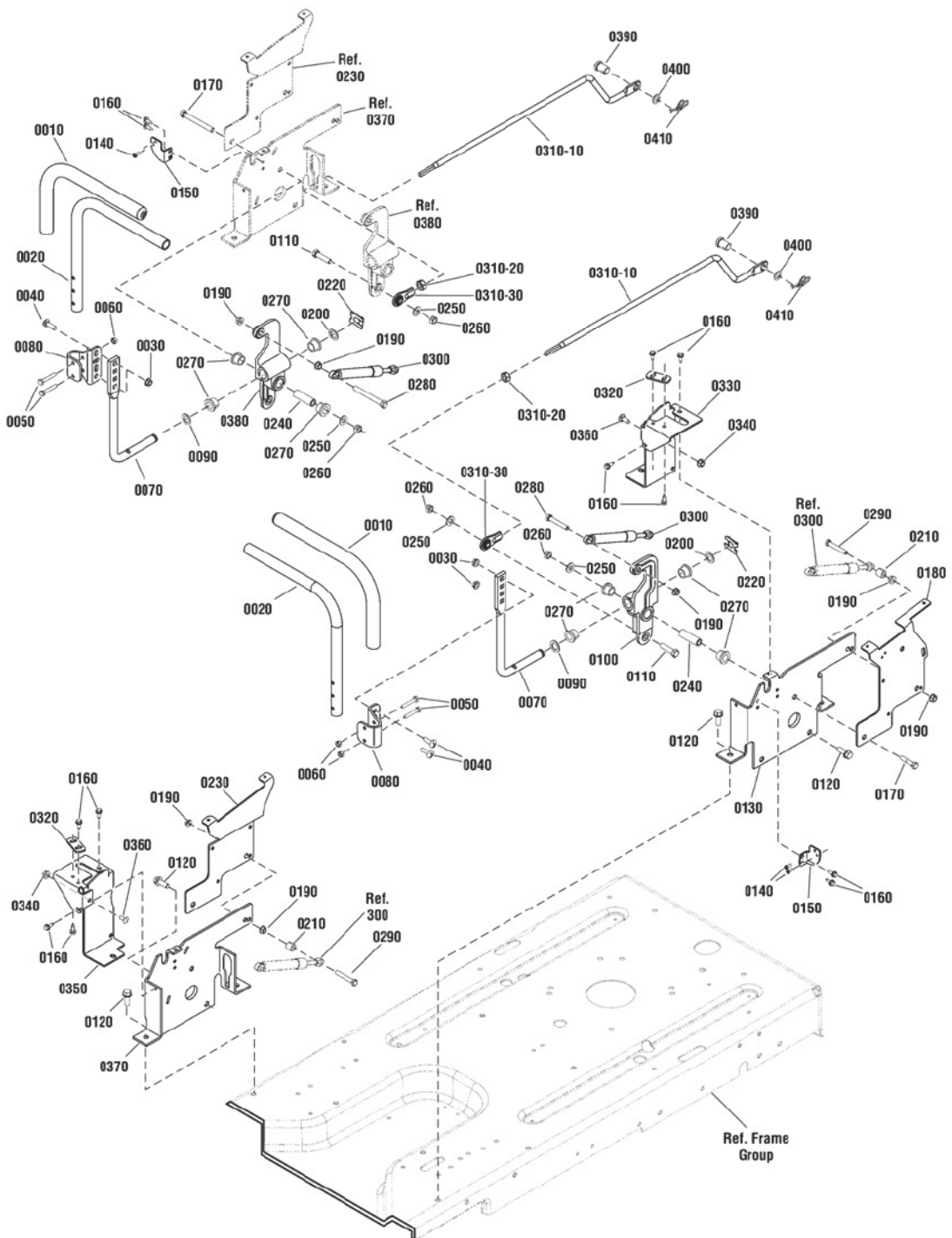
2691048-03 - ETZ20420

2691048-04 - ETZ20420

## Controls Group

NOTE: Unless noted otherwise,  
use the standard hardware torque  
specification chart.

2990106



The above parts group applies to the following Mfg. Nos.:

- 2691048-00 - ETZ20420
- 2691048-01 - ETZ20420
- 2691048-02 - ETZ20420
- 2691048-03 - ETZ20420
- 2691048-04 - ETZ20420

## Controls Group

REF NO	PART NO.	QTY.	DESCRIPTION
0010	7100051YP	2	GRIP, Handle
0020	7301168BMYP	2	HANDLE, Adjustable
0030	704061	4	NUT, Hex Flange, Two Way Lock, 5/16-18
0040	703483	4	BOLT, Carriage, Short Neck, 5/16-18 x 1, G5
0050	703234	4	CAPSCREW, Hex Head, 1/4-20 x 1-1/2, G5
0060	703954	4	NUT, Hex Center Lock, 1/4-20, G5
0070	7104677YP	2	ROD, Handle, Adjustable
0080	7074628BMYP	2	BRACKET, Handle Adjustment
0090	7091628SM	2	WASHER, Flat, 5/8 ID x 1 OD
0100	1755952YP	1	ARM, Control, LH
0110	703406	2	CAPSCREW, Hex Head, 3/8-16 x 1-1/2, G5
0120	704000	8	SCREW, Hex Washer Head, Self Tap, 3/8-16 x 1
0130	7043302BMYP	1	BRACKET, Control, LH
0140	704060	4	CAPSCREW, Hex Head Flange Taptite, Torx, #10C x 1/2
0150	7300032BMYP	2	BRACKET, Switch
0160	703466	12	SCREW, 1/4-20 x 3/4 Hex Washer Self-Tap, Black
0170	703874	2	CAPSCREW, Hex Head, 3/8-16 x 3-1/4, G5
0180	7301075BMYP	1	BRACKET, Lever, Parking Brake
0190	703409	8	NUT, 5/16-18, GR5, Serated Flange, Zinc/Clear
0200	7900016SM	2	WASHER, Nylon 5/16
0210	7023206YP	2	SPACER, 3/8 ID x 5/8 OD x 1/2 Long
0220	7104704YP	2	CLIP, Spring, 5/8 OD Shaft
0230	7301072BMYP	1	BRACKET, Fender Support, RH
0240	7100714YP	2	SPACER, Sleeve
0250	703590	4	WASHER, .406, Flat, Zinc/Clear
0260	703347	4	NUT, Hex Center Lock, 3/8-16, G5
0270	7013874SM	8	BUSHING
0280	703906	2	CAPSCREW, Hex Head, 5/16-18 x 1-1/2, G5
0290	703867	2	CAPSCREW, Hex Head, 5/16-18 x 2, G5
0300	5103511YP	2	DAMPENER, Control
0310-10	7104168YP	2	ROD, Link Fwd/Rev
0310-20	703895	2	NUT, Hex, 3/8-24, G5
0310-30	7100743YP	2	ROD END
0320	7300009BMYP	2	PLATE, Forward / Reverse Adjust
0330	7301128BMYP	1	BRACKET, Guide, Stick, Control, LH
0340	703233	2	NUT, Hex Flange, Whiz Lock, 1/4-20
0350	7301129BMYP	1	BRACKET, Guide, Stick, Control, RH
0360	7091573YP	2	BOLT, Carriage, Short Neck, 1/4-20 x 5/8, G5
0370	7043330BMYP	1	BRACKET, Control, RH
0380	1755953YP	1	ARM, Control, RH
0390	7900000SM	2	PIN, Clevis
0400	703964	2	WASHER, Flat
0410	7091594SM	2	PIN, Cotter, Self Locking, 1/2

## Footnotes

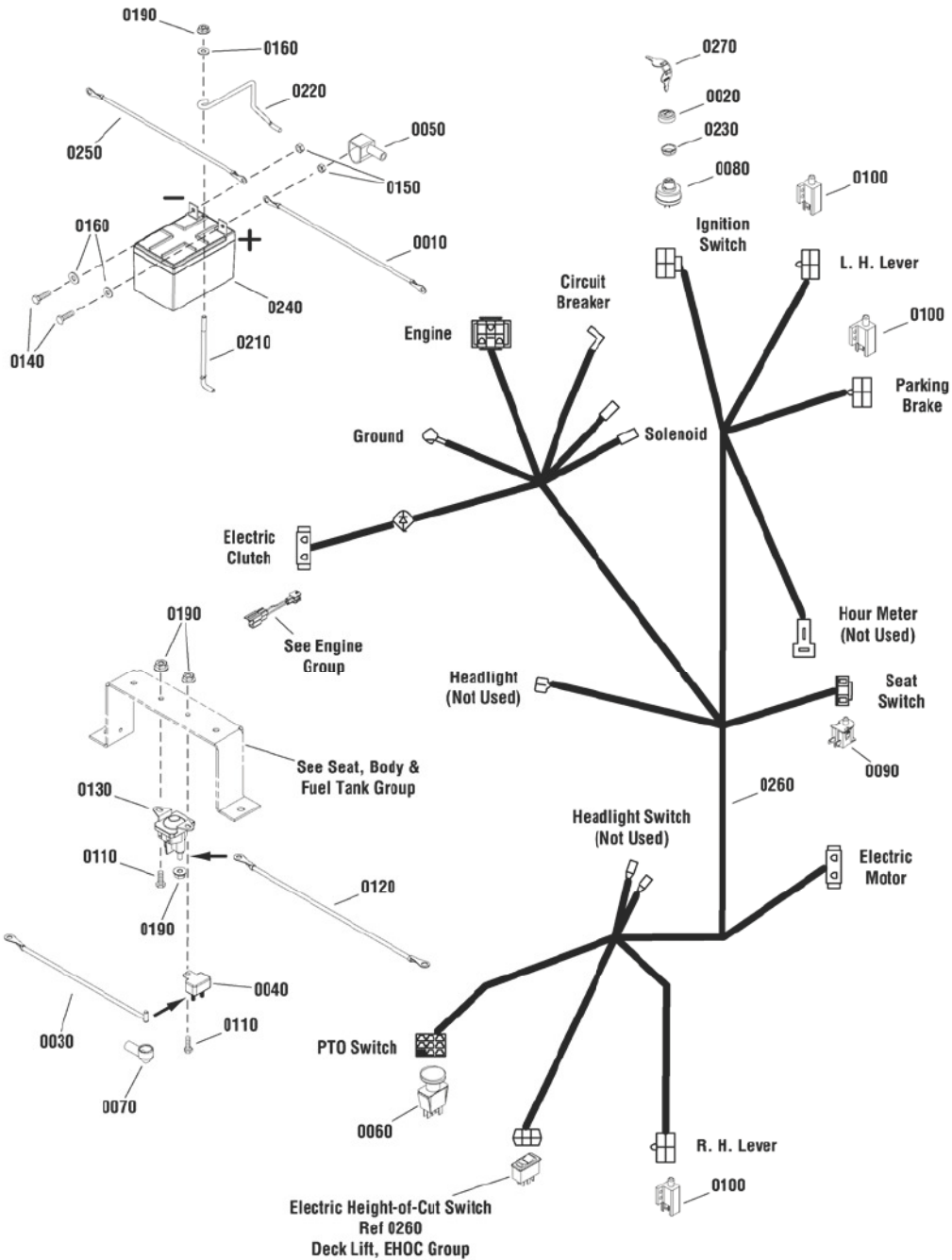
The above parts group applies to the following Mfg. Nos.:

2691048-00 - ETZ20420  
 2691048-01 - ETZ20420  
 2691048-02 - ETZ20420  
 2691048-03 - ETZ20420  
 2691048-04 - ETZ20420

## Electrical Group

2990294

NOTE: Unless noted otherwise,  
use the standard hardware torque  
specification chart.



The above parts group applies to the following Mfg. Nos.:

- 2691048-00 - ETZ20420
- 2691048-01 - ETZ20420
- 2691048-02 - ETZ20420
- 2691048-03 - ETZ20420
- 2691048-04 - ETZ20420

## Electrical Group

REF NO	PART NO.	QTY.	DESCRIPTION
0010	024X31MA	1	CABLE, Battery, Positive, 8 Gage, Red
0020	091488MA	1	CAP, Ignition Switch
0030	1665237SM	1	WIRE, 12 Gage, 8" Red
0040	1665238SM	1	BREAKER, Circuit 12 Volt 20 Amps w/Tab
0050	1677296SM	1	BOOT, Insulator, Battery Terminal PVC Red
0060	1722887SM	1	SWITCH, PTO Push/Pull Symbols
0070	1724588SM	1	COVER, Terminal Red Vinyl
0080	1737853YP	1	SWITCH ASSEMBLY, Ignition
0090	7023354YP	1	SWITCH, Seat, Push Button (NC)
0100	7023355YP	3	SWITCH, DPDT (NC/NO)
0110	703338	2	SCREW, 1/4-20 x 5/8 Hex Head Cap, GR 5, Zinc/Clear
0120	7042956SM	1	WIRE, Negative, 8 Gage, 14, Black
0130	1755382YP	1	SOLENOID, Super Trombetta, 2 Terminal
0140	703338	2	SCREW, 1/4-20 x 5/8 Hex Head Cap, GR 5, Zinc/Clear
0150	703954	2	NUT, 1/4-20 Hex Center Lock, GR 5 BZ
0160	703332	4	WASHER, 1/4" Flat, YZ
0190	7091584SM	6	NUT, 1/4-20 Hex Flange Lock, YZ
0210	7100308SM	1	ROD, Battery Hold Down
0220	7100309SM	1	ROD, Battery Bracket
0230	703995	1	NUT, 5/8-32, E-Start
0240	7060618SM	1	BATTERY, 12V 230 CCA
0250	7100636SM	1	CABLE, Battery, Negative, 8 Gage, 20", Black
0260	7103412YP	1	HARNESS, Wiring
0270	1737837YP	1	KEYS

Not for  
Reproduction

## Footnotes

The above parts group applies to the following Mfg. Nos.:

2691048-00 - ETZ20420

2691048-01 - ETZ20420

2691048-02 - ETZ20420

2691048-03 - ETZ20420

2691048-04 - ETZ20420







## Seat, Body & Fuel Tank Group

REF NO	PART NO.	QTY.	DESCRIPTION
0010	7103775YP	1	FENDER, RH
0040	7091246YP	2	SCREW, Pan Head Torx, 1/4-20 x 3/4
0060	1753791YP	1	FUEL TANK ASSEMBLY (Includes Ref. Nos. 0060-10, 0060-20, 0060-30 & 0060-40)
0060-10	5101651SM	1	CAP, Fuel Tank
0060-20	1726400SM	1	BUSHING, Fuel Tank, Rubber
0060-30	-----	1	TANK, Fuel (Not a serviceable part. Order Ref. No. 0060)
0060-40	7103536YP	1	ELBOW ASSEMBLY, Pickup Tube
0070	7301216BZYP	1	COVER, Battery
0080	1722611SM	1	PLUG
0090	7104514YP	2	STRIP, Trim, 1-1/2
0110	703986	2	RETAINER, Bolt, 3/8
0120	7103776YP	1	FENDER, LH
0130	7301107BMYP	1	BRACKET, Support, Seat & Fender
0140	703164	4	NUT, Hex Center Lock, 5/16-18, G5
0150	7043316BMYP	1	BRACKET, Seat Support
0160	703950	4	SCREW, Hex Washer Head, Self Tap, 3/8-16 x 3/4
0170	703902	2	NUT, Hex Lock, ESNA, 5/16-18
0180	7301101BMYP	2	BRACKET, Support, Fender
0190	703585	2	CAPSCREW, Hex Head, 5/16-18 x 1, G5
0200	7103425YP	2	SPRING, Compression, 3-5/8"
0210	703410	2	BOLT, Hex Flange, 5/16-18, x 1, G5
0230	7301126BMYP	1	PLATE, Side, RH
0290	7011763SM	2	WASHER, Fender, 5/16
0300	7103920YP	4	SPACER, Seat, Adjustable
0310	7103777YP	1	COVER, Engine
0320	1722460SM	1	PIN, Quick, 1-3/16"
0330	7103998YP	1	ROD, Pivot, Hood
0350	703297	4	RETAINER, Bolt, 5/16
0360	7103673BMYP	1	LATCH, Seat
0370	885215YP	1	COVER, Lever, Seat Adjustment
0380	703298	4	WASHER, 5/16
0390	1933689SM	4	SCREW, Hex Flange, Whiz Lock, 5/16-18 x 1-1/4
0400	703839	2	BOLT, Shoulder, 5/16-18 x 3/4" (1/2" Thread Length)
0410	7091198SM	2	SCREW, Hex Washer Head, Self Tap, 3/8-16 x 5/8
0420	7301095BMYP	1	PLATE, Seat, Adjustable
0440	7301070BMYP	1	BRACKET, Seat
0450	703333	1	NUT, Hex Flange, Whiz Lock, 3/8-16
0460	7301110BMYP	1	BRACKET, Support, Fuel Tank
0470	704015	1	WASHER, Flat, 0.34 ID x 5/8 OD
0480	703237	1	CAPSCREW, Hex Head, 3/8-16 x 3/4, G5
0490	704130	2	SCREW, Hex Washer Head, Taptite, 1/4-20 x 1/2
0510	7301217BMYP	2	BRACKET, Cover, Battery
0520	025X15MA	2	SCREW, Hex Washer Head, Thread Rolling, 3/8-16 x 3/4
1100	1754218YP	1	SEAT, 15" Back, with Armrests

### Footnotes

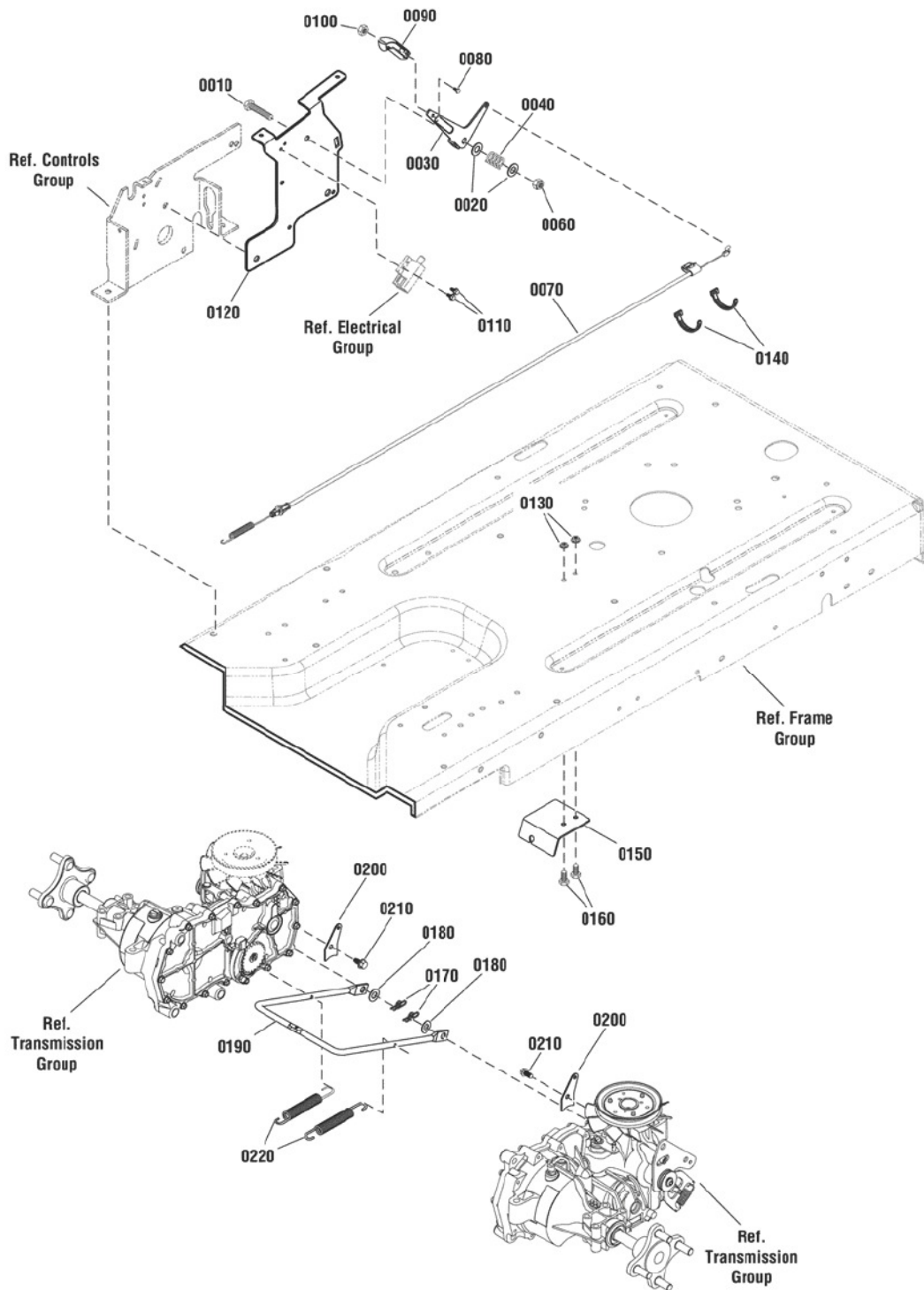
The above parts group applies to the following Mfg. Nos.:

2691048-00 - ETZ20420  
 2691048-01 - ETZ20420  
 2691048-02 - ETZ20420  
 2691048-03 - ETZ20420  
 2691048-04 - ETZ20420

## Parking Brake Group

2990151

NOTE: Unless noted otherwise, use the standard hardware torque specification chart.



The above parts group applies to the following Mfg. Nos.:

- 2691048-00 - ETZ20420
- 2691048-01 - ETZ20420
- 2691048-02 - ETZ20420
- 2691048-03 - ETZ20420
- 2691048-04 - ETZ20420

## Parking Brake Group

REF NO	PART NO.	QTY.	DESCRIPTION
0010	703872	1	SCREW, 3/8-16 x 2-1/4" Hex Head Cap, GR 5, YZ
0020	7090517SM	2	WASHER, 7/16" Flat, YZ
0030	7301074YP	1	LEVER, Park Brake
0040	7028036YP	1	SPRING, Friction Pack
0060	703117	1	NUT, 3/8-16, Nylock, GR5, Zinc/Clear
0070	7103792YP	1	CABLE, Park Brake, RZT
0080	7091017YP	1	SCREW, #8-32 x 3/8" Cross Recess Filister Head, GR 2, BZ
0090	7023655YP	1	LEVER, Throttle Control
0100	703460	1	NUT, #8-32 Hex, GR 2B, YZ
0110	704060	2	SCREW, #10-24 x 1/2" Hex Washer Self-Tap (Torx)
0120	7301075BMYP	1	BRACKET, Lever, Park Brake
0130	703233	2	NUT, 1/4-20 Hex Flange Lock, Black
0140	703586	2	* CABLE TIE, 7.0
0150	7301086BMYP	1	BRACKET, Cable, Park Brake
0160	703925	2	SCREW, 1/4-20 x 3/4" Hex Head Cap, GR 5 YZ
0170	7091594SM	2	COTTER PIN, 1/2 Self, YZ
0180	703590	2	WASHER, 3/8" Flat (SAE) YZ
0190	7103436YP	1	ROD, Park Brake, RZT
0200	7301092AYP	2	TAB, Spring, Park Brake
0210	704130	2	SCREW, 1/4-20 x 1/2" Hex Washer Self-Tap, Black
0220	703144	2	SPRING, Extension, 0.562 OD x 4.250 LG .049 Wire, Black

Not for  
Reproduction

### Footnotes

Note:\* Secure parking brake (item 0070) to frame & control bracket, using cable tie (item 0140).

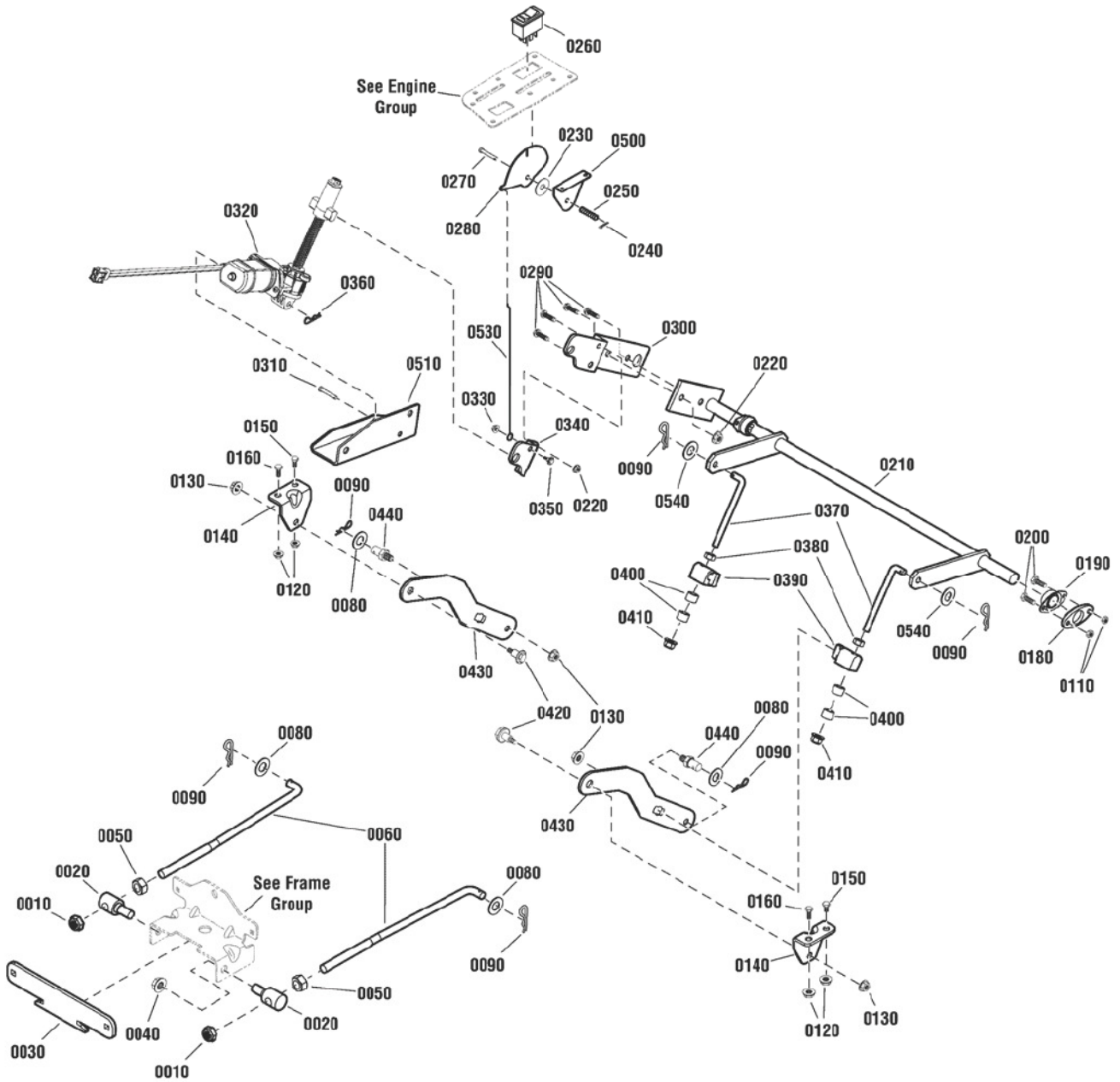
### The above parts group applies to the following Mfg. Nos.:

2691048-00 - ETZ20420  
2691048-01 - ETZ20420  
2691048-02 - ETZ20420  
2691048-03 - ETZ20420  
2691048-04 - ETZ20420

# Lift Group

2990165

NOTE: Unless noted otherwise,  
use the standard hardware torque  
specification chart.



The above parts group applies to the following Mfg. Nos.:

- 2691048-00 - ETZ20420
- 2691048-01 - ETZ20420
- 2691048-02 - ETZ20420
- 2691048-03 - ETZ20420
- 2691048-04 - ETZ20420

## Lift Group

REF NO	PART NO.	QTY.	DESCRIPTION
0010	1960379SM	4	NUT, 1/2-13 Jam, Esna Light Thin
0020	1737417YP	2	TRUNNION, Unthreaded
0030	7301097BMYP	1	SUPPORT, Hanger (46/52)
0040	1930644SM	2	NUT, 1/2-13 Hex Flange Two-Way Lock Black
0050	1913744SM	4	NUT, 1/2-13 Hex Jam, Black
0060	1736081YP	4	ROD, Front Bail (1/2-13 thread) 46, 52" MWR
0080	703853	6	WASHER, 1/2" Flat (0.51 ID x 1.00 OD x .10 Thick) Black
0090	703300	6	HAIR PIN, 3/32 x 1-1/2" YZ
0110	703954	4	NUT, 1/4-20 Hex Center Lock, GR 5
0120	703409	4	NUT, 5/16-18 Flange Lock, YZ
0130	703893	4	NUT, 3/8-16 Hex Flange Center Lock, Zinc Plated
0140	7300028BMYP	2	BRACKET, Deck Hanger
0150	703823	2	BOLT, 5/16-18 x 5/8" Hex Flange lock, GR 5, YZ
0160	703585	2	SCREW, 5/16-18 x 1" Hex Head Cap, GR 5, YZ
0180	7301125BMYP	1	SPACER, Bearing, .25"
0190	7026196SM	1	BEARING, Flange, .75 ID PM
0200	7091495SM	4	SCREW, 1/4-20 x 3/4" Hex Head Cap, GR 5 YZ
0210	1757866BMYP	1	DECK LIFT ASSEMBLY (Use after serial Nos. 2016328880)
0210	7400011BMYP	1	DECK LIFT ASSEMBLY (Use before serial Nos. 2016328880)
0220	703333	4	NUT, 3/8-16 Hex Flange lock, YZ
0230	7023649YP	1	WASHER, 5/16" Nylon
0240	703464	1	COTTER PIN, .06 x 1/2", YZ
0250	164X34MA	1	SPRING, Compression
0260	1734141SM	1	SWITCH, Rocker Electric Height-Of-Cut
0270	578309MA	1	CLEVIS PIN, .25 x 1.09
0280	7301119BCYP	1	LEVER, Indicator, Height-Of-Cut
0290	703407	4	SCREW, 3/8-16 x 1" Hex Head Cap, GR 5, YZ
0300	7301104BMYP	1	BRACKET, Lift, Deck, Primary
0310	1668344SM	1	SHEAR PIN, .248 ID x 1-3/4" Long
0320	7103818YP	1	MOTOR, Actuator, Lift, Deck
0330	7091584SM	1	NUT, 1/4-20 Hex Flange Lock, GR 5, YZ
0340	7301105BMYP	1	BRACKET, Lift, Deck, Secondary
0350	009X54MA	1	SHOULDER BOLT, 1/4-20 x 3/8"
0360	1722460SM	1	HAIRPIN, Quick, .080 Wire
0370	1734217SM	2	ROD, Mower Lift (3/8-16 thread) Yellow
0380	703577	2	NUT, Hex, 3/8-16
0390	1731894SM	2	TRUNNION, Powdered Metal, Yellow, Regent
0400	1666294SM	2	SPACER, .385 ID x .6697 OD x .455 Long, PM YEL
0410	1960687SM	2	NUT, 3/8-16 Hex Flange Esna, Black
0420	1732129SM	2	SHOULDER BOLT, 3/8-16 x .94, BZ
0430	7301098BMYP	2	BAR, Rear Lift
0440	094067MA	2	PIN, 3/8-16 Threaded Shoulder
0500	7301120BMYP	1	BRACKET, Indicator, Height-Of-Cut
0510	7301103BMYP	1	BRACKET, Motor Mount

## Footnotes

The above parts group applies to the following Mfg. Nos.:

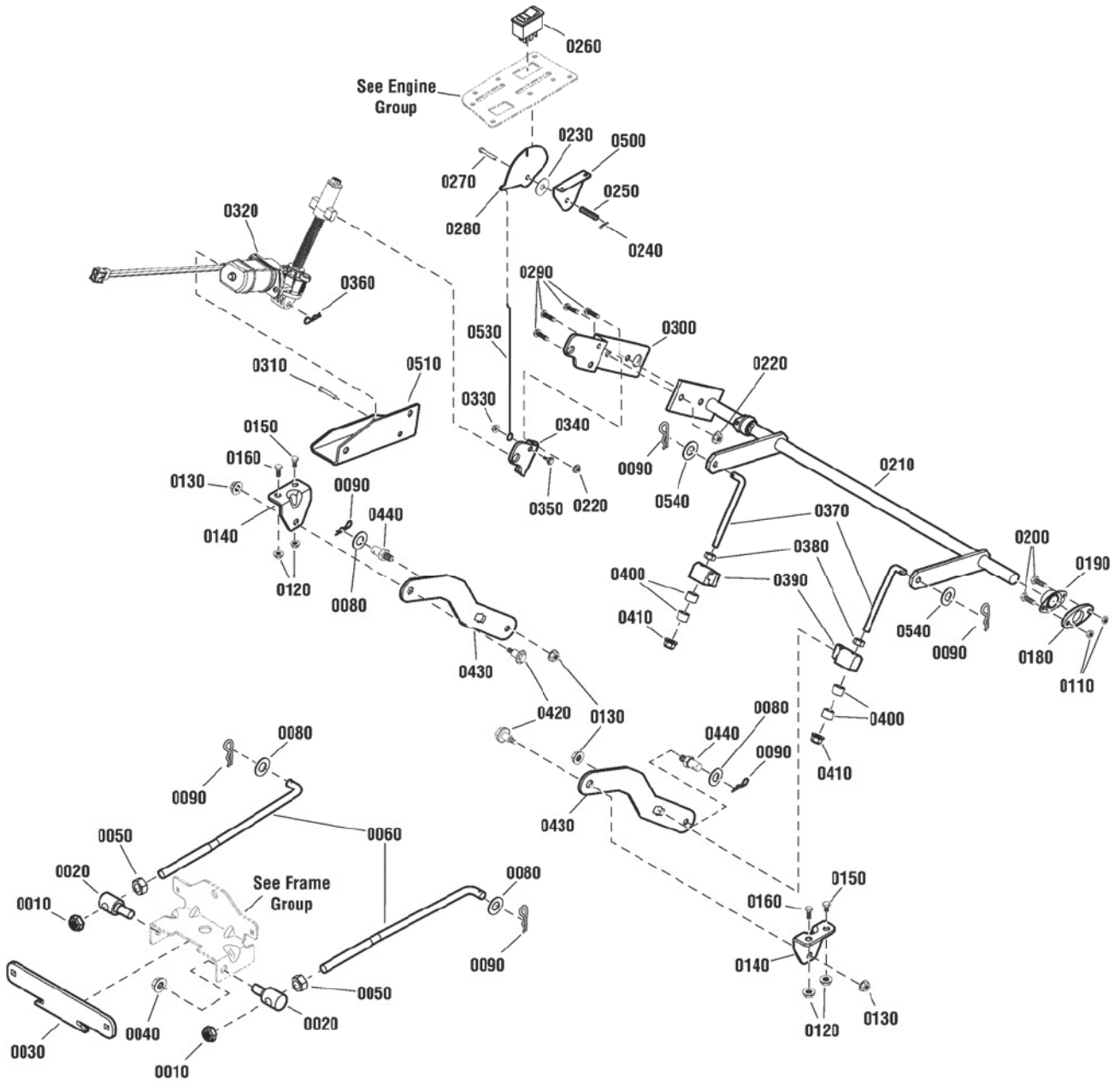
2691048-00 - ETZ20420  
2691048-01 - ETZ20420  
2691048-02 - ETZ20420  
2691048-03 - ETZ20420  
2691048-04 - ETZ20420



## Lift Group

2990165

NOTE: Unless noted otherwise,  
use the standard hardware torque  
specification chart.



The above parts group applies to the following Mfg. Nos.:

- 2691048-00 - ETZ20420
- 2691048-01 - ETZ20420
- 2691048-02 - ETZ20420
- 2691048-03 - ETZ20420
- 2691048-04 - ETZ20420

### **Lift Group**

---

<b>REF NO</b>	<b>PART NO.</b>	<b>QTY.</b>	<b>DESCRIPTION</b>
0530	7103956YP	1	ROD, Indicator, Height-Of-Cut
0540	7090122YP	2	WASHER, 3/8" Flat (SAE)

---

Not for  
Reproduction

### **Footnotes**

---

**The above parts group applies to the following Mfg. Nos.:**

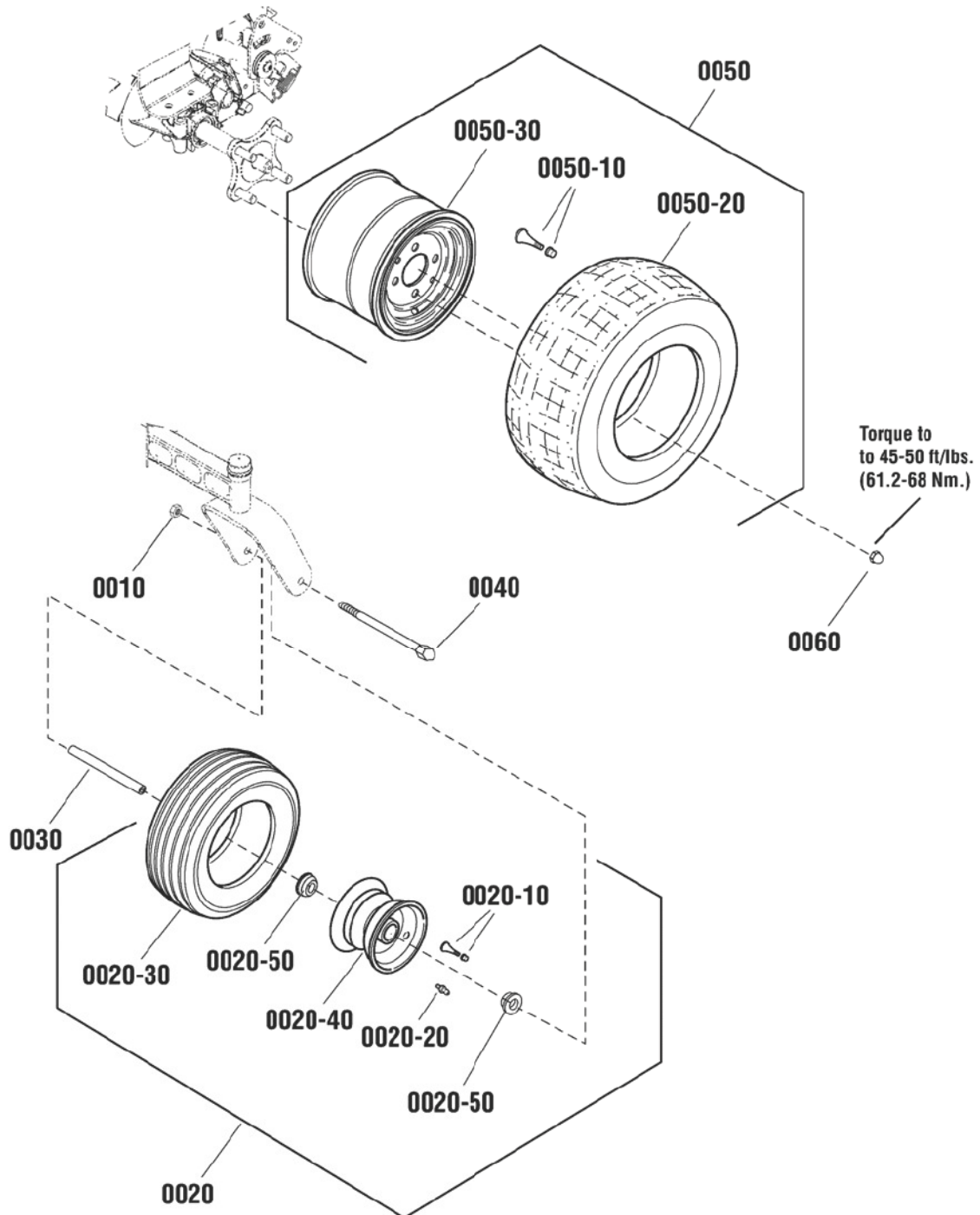
2691048-00 - ETZ20420  
2691048-01 - ETZ20420  
2691048-02 - ETZ20420  
2691048-03 - ETZ20420  
2691048-04 - ETZ20420



## Wheel & Tire Group

2990157

NOTE: Unless noted otherwise,  
use the standard hardware torque  
specification chart.



The above parts group applies to the following Mfg. Nos.:

- 2691048-00 - ETZ20420
- 2691048-01 - ETZ20420
- 2691048-02 - ETZ20420
- 2691048-03 - ETZ20420
- 2691048-04 - ETZ20420

## Wheel & Tire Group

REF NO	PART NO.	QTY.	DESCRIPTION
0010	7090839SM	2	NUT, 7/16-14 Hex Center Lock, GR 5, ZP
0020	1734013SM	2	ASSEMBLY, Wheel & Tire, Front Caster (Includes Ref. Nos. 0020-10, 0020-20, 0020-30, 0020-40 & 0020-50)
0020-10	2172353SM	1	VALVE STEM & CAP
0020-20	7104428YP	1	ZERK, Grease, 8M x 1, 45 Degree
0020-30	1734875SM	1	TIRE, 11 x 4.00 - 5
0020-40	-----	1	WHEEL RIM, 3.00 Wide 5.00 Dia. 0.625 ID Bushings (Not a serviceable part, order Ref. No. 0020)
0020-50	1739281YP	2	BUSHING, 5/8 ID Short
0030	1734841SM	2	TUBE, Caster Wheel, 0.625 OD 4.53 OLG 0.625 OD
0040	7091772SM	2	SCREW, 7/16-14 x 6" Hex Head Cap, GR 5, YZ
0050	7104645YP	2	ASSEMBLY, Rear Wheel & Tire, 18 x 8.50-8, K500 (Includes Ref. Nos. 0050-10, 0050-20 & 0050-30)
0050-10	7012234SM	1	VALVE STEM
0050-20	7072705YP	1	TIRE, 18 x 8.50-8 4P K500 Tread Kenda
0050-30	-----	1	RIM, W8 x 5.375 4H POS Silver (Not a serviceable part, order Ref. No. 0050)
0060	7027192SM	8	LUG NUT, 1/2-20 YZ

Not for  
Reproduction

## Footnotes

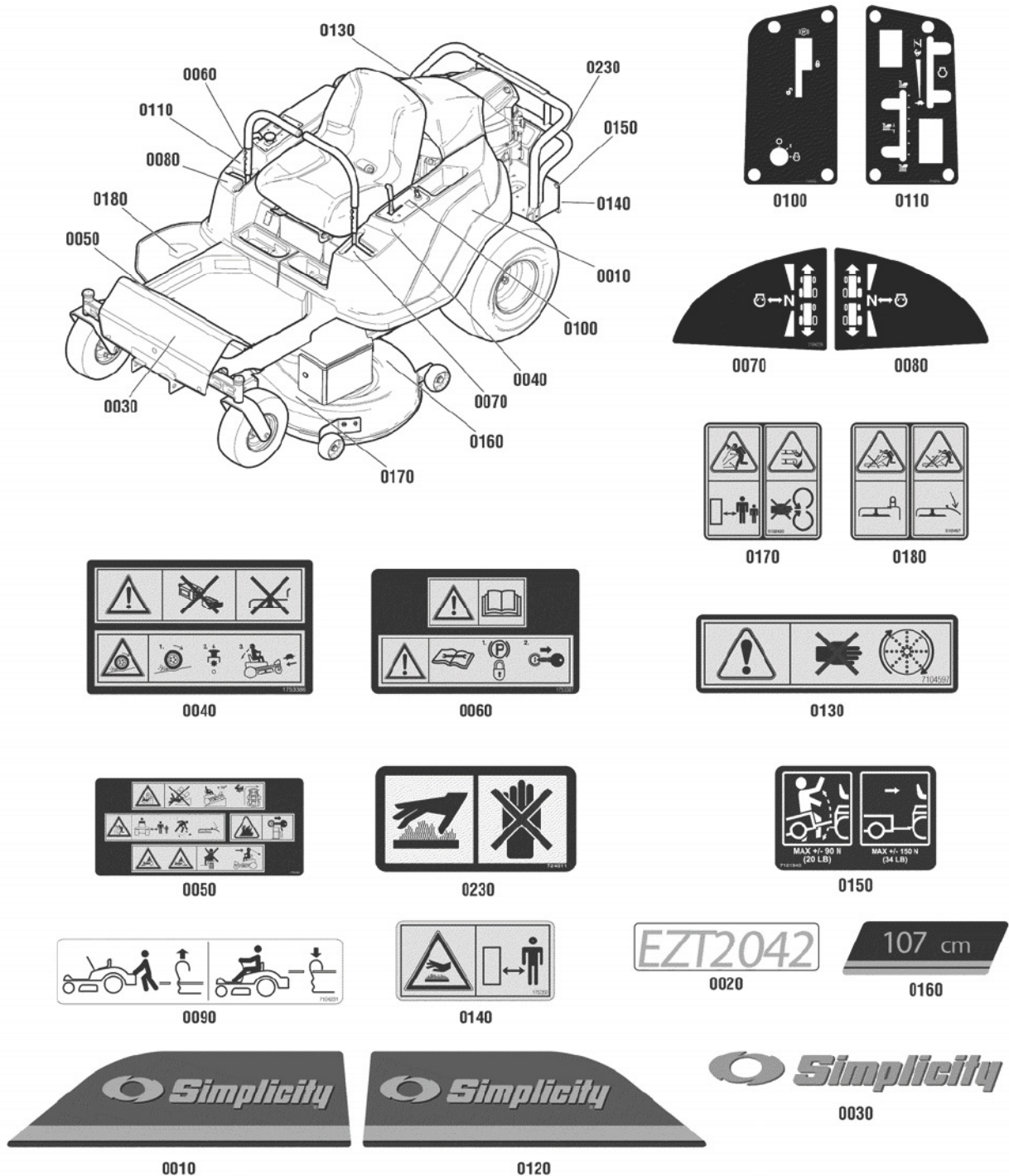
The above parts group applies to the following Mfg. Nos.:

2691048-00 - ETZ20420  
2691048-01 - ETZ20420  
2691048-02 - ETZ20420  
2691048-03 - ETZ20420  
2691048-04 - ETZ20420

## Decal Group

NOTE: Unless noted otherwise, use the standard hardware torque specification chart.

2990158



The above parts group applies to the following Mfg. Nos.:

2691048-00 - ETZ20420

2691048-01 - ETZ20420

2691048-02 - ETZ20420

## Decal Group

REF NO	PART NO.	QTY.	DESCRIPTION
0010	7104311	1	DECAL, Fender, Logo, LH
0020	1753464	1	DECAL, Model
0030	1722551	2	DECAL, Simplicity, Silver & Blue
0040	1753386	1	DECAL, Warning, LH
0050	1753388	1	DECAL, Danger, CE
0060	1753387	1	DECAL, Warning, RH
0070	7104226	1	DECAL, Handle, Ground Speed, LH
0080	7104227	1	DECAL, Handle, Ground Speed, RH
0090	7104231	2	DECAL, Release, Transaxle
0100	7104232	1	DECAL, Panel, Control, LH
0110	7104233	1	DECAL, Panel, Control, RH
0120	7104310	1	DECAL, Fender, Logo, RH
0130	7104597	1	DECAL, Screen, Rotating
0140	1753350	1	DECAL, Hot Exhaust
0150	7101940	1	DECAL, Weight Limitation
0160	1753466	1	DECAL, Deck, 107cm
0170	5102420	2	DECAL, Danger, Mower Deck
0180	5102457	1	DECAL, Danger Discharge
0230	724011	1	DECAL, Heat Shield Warning

Not for  
Reproduction

## Footnotes

The above parts group applies to the following Mfg. Nos.:

2691048-00 - ETZ20420

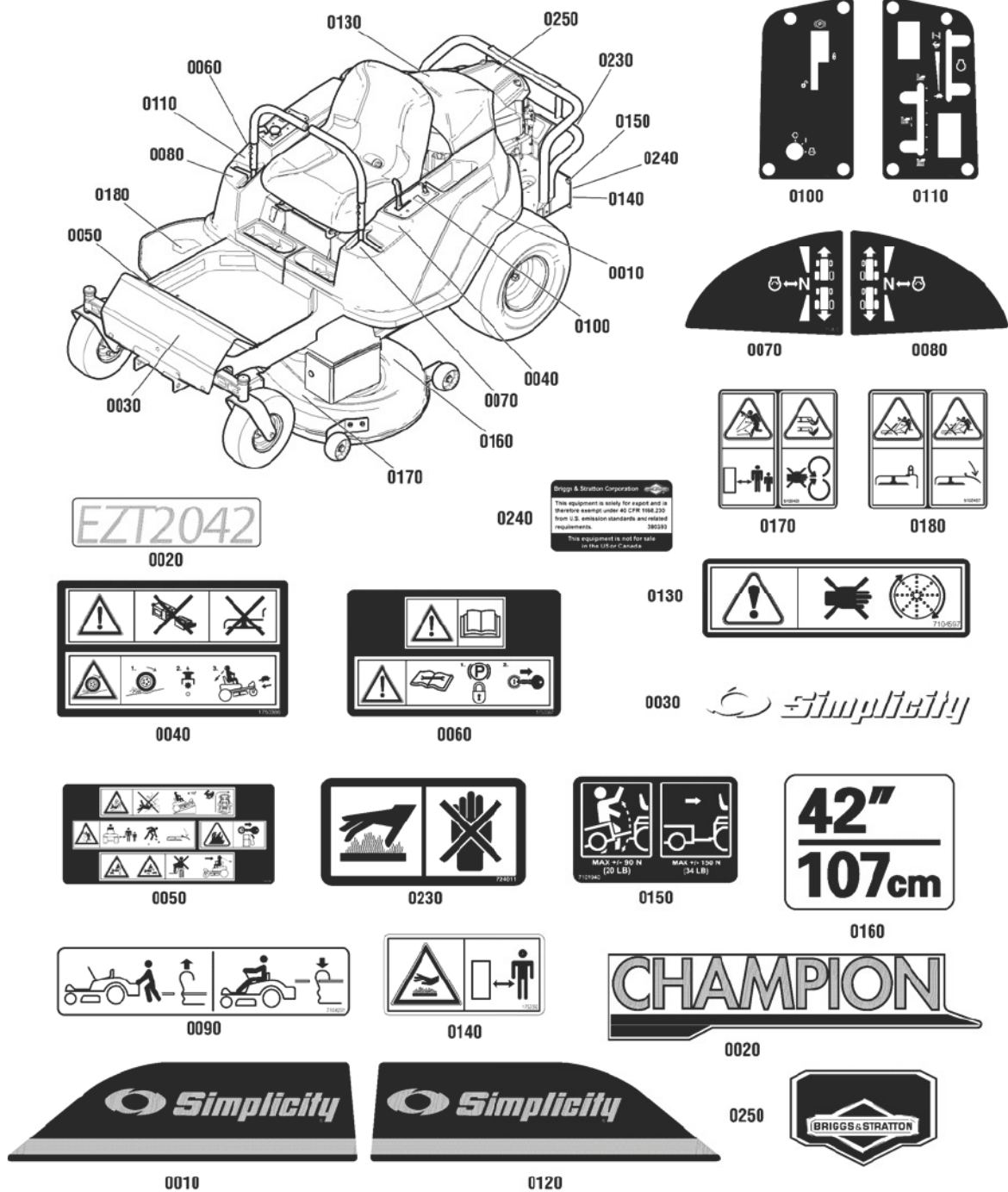
2691048-01 - ETZ20420

2691048-02 - ETZ20420

## Decals Group

NOTE: Unless noted otherwise, use the standard hardware torque specification chart.

2991823



The above parts group applies to the following Mfg. Nos.:

2691048-03 - ETZ20420

2691048-04 - ETZ20420

## Decals Group

REF NO	PART NO.	QTY.	DESCRIPTION
0010	7104311YP	1	DECAL, Fender, LH, Simplicity ZT2000
0020	5104094YP	1	DECAL, Champion Logo (used on serial nos. after 2017009337)
0020	1753464YP	1	DECAL, Model, SMI EZT2042 (used on serial nos. before 2016366425)
0030	1722551SM	2	DECAL, Simplicity, Silver & Blue, W/Icon
0040	1753386YP	1	DECAL, Warning, LH
0050	1753388YP	1	DECAL, Danger, CE
0060	1753387YP	1	DECAL, Warning, RH
0070	7104226YP	1	DECAL, Handle, Ground Speed, LH
0080	7104227YP	1	DECAL, Handle, Ground Speed, RH
0090	7104231YP	2	DECAL, Release, Transaxle
0100	7104232YP	1	DECAL, Panel, Control, LH
0110	7104233YP	1	DECAL, Panel, Control, RH
0120	7104310YP	1	DECAL, Fender, RH, Simplicity ZT2000
0130	7104597YP	1	DECAL, Screen, Rotating
0140	1753350YP	1	DECAL, Hot Exhaust
0150	7101940YP	1	DECAL, Weight Limitation
0160	1755716YP	1	DECAL, Mower Width 42IN/107CM
0170	5102420YP	2	DECAL, Danger, Mower Deck
0180	5102457YP	1	DECAL, Danger Discharge
0230	44X5936MA	1	DECAL, Heat Shield Warning
0240	380393YP	2	LABEL, Soley For Export, CFR 40 Exempt
0250	1754246YP	1	DECAL, Powered by Briggs

Not for  
Reproduction

## Footnotes

The above parts group applies to the following Mfg. Nos.:

2691048-03 - ETZ20420

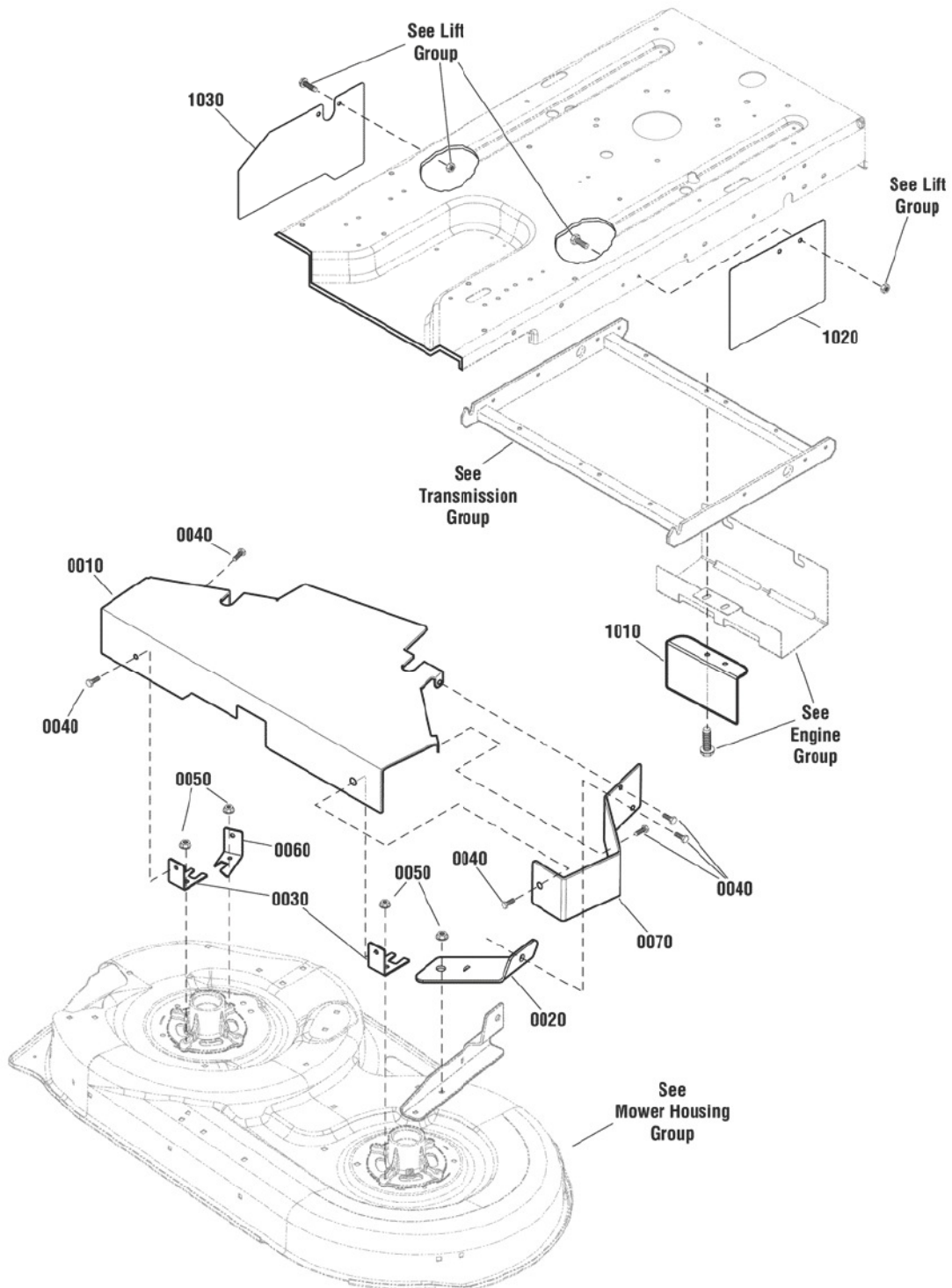
2691048-04 - ETZ20420



## French Guard Group - Frame & Deck

NOTE: Unless noted otherwise,  
use the standard hardware torque  
specification chart.

2990230\_2990256



The above parts group applies to the following Mfg. Nos.:

2691048-00 - ETZ20420  
2691048-01 - ETZ20420  
2691048-02 - ETZ20420  
2691048-03 - ETZ20420  
2691048-04 - ETZ20420



### **French Guard Group - Frame & Deck**

<b>REF NO</b>	<b>PART NO.</b>	<b>QTY.</b>	<b>DESCRIPTION</b>
0010	1753699BMYP	1	COVER, French Guard
0020	1753698BMYP	1	BRACKET, Support, FT
0030	1736518BMYP	3	BRACKET, Cover, Belt, Front
0040	703949	6	SCREW, Hex Washer Head, Taptite, 5/16-18 x 5/8
0050	703409	3	NUT, Hex Flange, Whiz Lock, 5/16-18
0060	1753670BMYP	1	BRACKET, Cover, Belt, Front
0070	1753697BMYP	1	PLATE, French Guard, Side
1010	1753457BMYP	1	GUARD, French Guard, Rear
1020	1753459BMYP	1	GUARD, Side Plate, LH
1030	1753460BMYP	1	GUARD, Side Plate, RH

Not for  
Reproduction

### **Footnotes**

---

**The above parts group applies to the following Mfg. Nos.:**

2691048-00 - ETZ20420

2691048-01 - ETZ20420

2691048-02 - ETZ20420

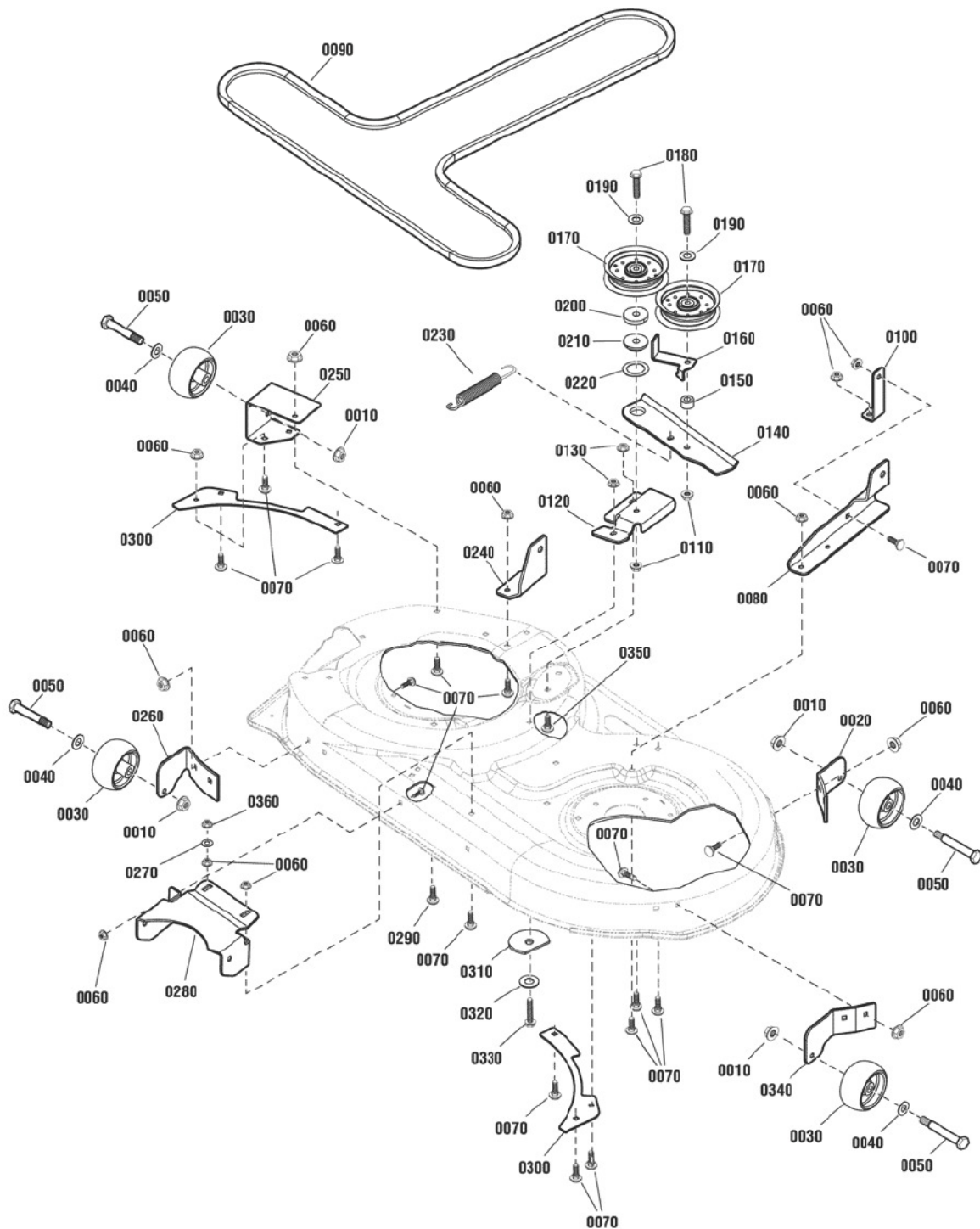
2691048-03 - ETZ20420

2691048-04 - ETZ20420

## 42" Mower Deck - Clutch & Support Group

2990162

NOTE: Unless noted otherwise,  
use the standard hardware torque  
specification chart.



The above parts group applies to the following Mfg. Nos.:

- 2691048-00 - ETZ20420
- 2691048-01 - ETZ20420
- 2691048-02 - ETZ20420
- 2691048-03 - ETZ20420
- 2691048-04 - ETZ20420

## 42" Mower Deck - Clutch & Support Group

REF NO	PART NO.	QTY.	DESCRIPTION
0010	703158	4	NUT, 3/8-16 Hex Flange Esna, Black
0020	1731403BMYP	1	SUPPORT, Gage Wheel, LH
0030	1714760SM	4	WHEEL, Gage
0040	703853	4	WASHER, 1/2" Flat (0.51 ID x 1.00 OD x .10 Thick) Black
0050	2108765SM	4	SHOULDER BOLT, 3/8-16 Thread
0060	703409	22	NUT, 5/16-18, Hex Flange Lock, YZ
0070	703185	21	BOLT, 5/16-18 x 3/4" Round Head Short Square Neck, GR 5, Black
0080	7301165BZYP	1	BRACKET, Support, Deck, Rear LH (Use before serial Nos. 2016328880)
0080	1753881BMYP	1	BRACKET, Support, Deck, Rear LH (Use after serial Nos. 2016328880)
0090	1732956SM	1	V-BELT, HA 118.00 LG A-Wedge Aramid
0100	1733577BMYP	1	SUPPORT, Brace
0110	703333	2	NUT, 3/8-16 Hex Flange Lock, GR F, BZ
0120	7300569BMYP	1	BRACKET, Idler, 42" Deck
0130	1927557SM	2	NUT, 5/16-18 Hex Flange Lock, Large, Black
0140	1734243BMYP	1	ARM, Idler
0150	7016719YP	1	SPACER, .750 OD x.390 ID x .50 Long
0160	7301201BZYP	1	BELT GUIDE, Idler, 42" deck
0170	1736540YP	2	PULLEY, Idler
0180	703872	2	SCREW, 3/8-16 x 2-1/4" Hex Head Cap, GR 5, YZ
0190	71072MA	2	WASHER, 3/8" Flat (SAE) YZ
0200	1960534SM	1	WASHER, 3/8" Flat (0.41 ID x 1.50 OD x .25 Thick) Black
0210	1714255SM	1	SPACER, .406 ID x 1.50 OD x .350 Thick, PM
0220	7031079YP	1	WASHER, Thrust
0230	1733844SM	1	SPRING, Extension
0240	7301172BZYP	1	BRACKET, Support, Deck, Rear, RH (Use before serial Nos. 2016328880)
0240	1753882BMYP	1	BRACKET, Support, Deck, Rear, RH (Use after serial Nos. 2016328880)
0250	7301171BMYP	1	BRACKET, Gage Wheel, Rear, RH, 42"
0260	1731402BMYP	1	SUPPORT, Gage Wheel, RH
0270	703298	1	WASHER, .34 ID x 1" OD x .13 Thick, Flat, CZ
0280	7301170BMYP	1	BRACKET, Hanger, Front, 42"
0290	703175	1	BOLT, 5/16-18 x 1-3/4" Round Head Short Square Neck, GR 5
0300	092426E701MA	2	PLATE, Rear
0310	7091775SM	1	WASHER, Flat, Special, .531 x 2.5 x .135, YZ
0320	703878	1	WASHER, 3/8" Flat (.41 ID x .87 OD)
0330	703410	1	BOLT, 5/16-18 x 1" Hex Flange Lock, GR 5, YZ
0340	1732258BMYP	1	BRACKET, Gage Wheel, Front, LH
0350	704065	1	BOLT, 5/16-18 x 7/8" Round Head Short Square Neck, GR 5, Black
0360	704061	1	NUT, 5/16-18 Hex Flange Two-Way Lk Ga

### Footnotes

The above parts group applies to the following Mfg. Nos.:

2691048-00 - ETZ20420  
 2691048-01 - ETZ20420  
 2691048-02 - ETZ20420  
 2691048-03 - ETZ20420  
 2691048-04 - ETZ20420



## 42" Mower Deck - Housing, Arbor & Blade Group

REF NO	PART NO.	QTY.	DESCRIPTION
0020	1920676SM	2	CAPSCREW, Hex Head, 7/16-14 x 1, G5
0030	1656916SM	4	WASHER, Spring, 0.475ID x 1-3/4 OD
0040	703167	12	SCREW, Hex Washer Head, Self Tap, 5/16-18 x 1-1/4
0050	1752100AYP	2	BLADE, 42"
0060	1750458BZ	1	PLATE, Spindle, LH
0070	7600211YP	1	KIT, Aluminum Spindle Assembly
0070-10	1735323YP	2	SHIELD, Arbor
0070-20	1735326YP	1	SHAFT, Spindle
0070-30	1735328YP	2	SPACER, Bearing
0070-40	1735399YP	2	BEARING, Ball, 20mm
0070-50	1735573YP	1	HOUSING, Spindle, Cast Aluminum
0070-51	1704314	1	FITTING, Zerk (Included with Ref. No. 0070-50)
0070-60	1960766YP	2	RING, Self Lock
0090	1737457YP	2	SPACER, Pulley
0100	1737835YP	2	PULLEY, V Deep Groove
0110	704007	2	LOCKWASHER, Spring, 7/16
0120	703171	2	CAPSCREW, Hex Head, 7/16-14 x 1-3/4, G5
0140	1736504CYP	1	HOUSING, Mower, 42"
0160	1750457BMYP	1	PLATE, Spindle, RH
0170	1927557SM	2	NUT, Hex Flange, Whiz Lock, 5/16-18
0180	703179	1	NUT, Push, 1/2
0190	7104733YP	1	CHUTE, Discharge
0200	7104640YP	1	ROD, Pivot, Discharge Chute
0210	7035813SM	1	SPRING, Torsion, Discharge Chute
0220	7301176BMYP	1	BRACKET, Hinge

### Footnotes

The above parts group applies to the following Mfg. Nos.:

2691048-00 - ETZ20420  
2691048-01 - ETZ20420  
2691048-02 - ETZ20420  
2691048-03 - ETZ20420  
2691048-04 - ETZ20420

Not for  
Reproduction

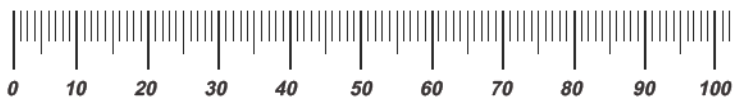


# Hardware Identification & Torque Specifications

Torque Specification Chart								
FOR STANDARD METRIC MACHINE HARDWARE (Tolerance ± 20%)								
Property Class	5.6		8.8		10.9		12.9	
	Class 5.6		Class 8.8		Class 10.9		Class 12.9	
Size Of Hardware	in/lbs	Nm.	in/lbs	Nm.	in/lbs	Nm.	in/lbs	Nm.
	ft/lbs		ft/lbs		ft/lbs		ft/lbs	
M3	5.88	.56	13.44	1.28	19.2	1.80	22.92	2.15
M4	13.44	1.28	30.72	2.90	43.44	4.10	52.56	4.95
M5	26.4	2.50	60.96	5.75	5.97	8.10	7.15	9.7
M6	44.64	4.3	7.3	9.9	10.3	14	12.1	16.5
M7	5.2	7.1	12.1	16.5	16.9	23	19.9	27
M8	7.7	10.5	17.7	24	25	34	29	40
M10	15	21	35	48	50	67	59	81
M12	26	36	61	83	86.2	117	103	140
M14	42	58	101	132	136	185	162	220
M16	64	88	147	200	210	285	250	340
M18	89	121	202	275	287	390	346	470
M20	126	171	290	390	405	550	486	660
M22	169	230	390	530	559	745	656	890
M24	217	295	497	375	708	960	840	1140
M27	320	435	733	995	1032	1400	1239	1680
M30	435	590	995	1350	1401	1900	1681	2280
M33	590	800	1349	1830	1902	2580	2278	3090
M36	759	1030	1740	2360	2441	3310	2935	3980
M39	988	1340	2249	3050	3163	4290	3798	5150

Torque Specification Chart						
FOR STANDARD MACHINE HARDWARE (Tolerance ± 20%)						
Hardware Grade	No Marks		SAE Grade 5		SAE Grade 8	
	SAE Grade 2		SAE Grade 5		SAE Grade 8	
Size Of Hardware	in/lbs	Nm.	in/lbs	Nm.	in/lbs	Nm.
	ft/lbs		ft/lbs		ft/lbs	
8-32	19	2.1	30	3.4	41	4.6
8-36	20	2.3	31	3.5	43	4.9
10-24	27	3.1	43	4.9	60	6.8
10-32	31	3.5	49	5.5	68	7.7
1/4-20	66	7.6	8	10.9	12	16.3
1/4-28	76	8.6	10	13.6	14	19.0
5/16-18	11	15.0	17	23.1	25	34.0
5/16-24	12	16.3	19	25.8	29	34.0
3/8-16	20	27.2	30	40.8	45	61.2
3/8-24	23	31.3	35	47.6	50	68.0
7/16-14	30	40.8	50	68.0	70	95.2
7/16-20	35	47.6	55	74.8	80	108.8
1/2-13	50	68.0	75	102.0	110	149.6
1/2-20	55	74.8	90	122.4	120	163.2
9/16-12	65	88.4	110	149.6	150	204.0
9/16-18	75	102.0	120	163.2	170	231.2
5/8-11	90	122.4	150	204.0	220	299.2
5/8-18	100	136	180	244.8	240	326.4
3/4-10	160	217.6	260	353.6	386	525.0
3/4-16	180	244.8	300	408.0	420	571.2
7/8-9	140	190.4	400	544.0	600	816.0
7/8-14	155	210.8	440	598.4	660	897.6
1-8	220	299.2	580	788.8	900	1,244.0
1-12	240	326.4	640	870.4	1,000	1,360.0

The guides and ruler furnished below are designed to help you select the appropriate hardware.

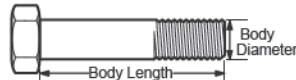


Nut, M8

Thread Diameter (mm)

Inside Diameter (in)      Threads per inch

Nut, 1/2-16

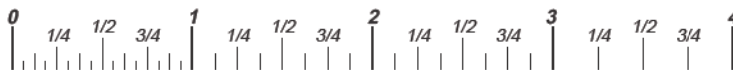


Screw, M8- 1.25 x 25

Thread Diameter (mm)      Distance between threads (mm)      Body Length (mm)

Body Diameter      Threads per inch      Body Length (in)

Screw, 1/2- 16 x 2



## Standard Hardware Sizing

When a washer or nut is identified as 1/2" (M8), this is the *Nominal size*, meaning the *inside diameter* is 1/2 inch (8mm metric thread diameter); if a second number is present it represents the *threads per inch* (distance between threads).

When bolt or capscrew is identified as 1/2 - 16 x 2" (M8 - 1.25 x 50), this means the *Nominal size*, or body diameter is 1/2 inch (8mm metric thread diameter), the second number, 16, represents the *threads per inch*, (1.25 thread diameter). The final number is the body length of the bolt or screw, 2 inches (50mm).

## NOTES

- These torque values are to be used for all hardware excluding: locknuts, self-tapping screws, thread forming screws, sheet metal screws and socket head setscrews.
- Recommended seating torque values for locknuts:
  - for prevailing torque locknuts - use 65% of grade 5 torques.
  - for flange whizlock nuts and screws - use 135% of grade 5 torques.
- Unless otherwise noted on assembly drawings, all torque values must meet this specification.

## Common Hardware Types

Hex Head Capscrew



Washer



Lockwasher








Carriage Bolt



Hex Nut



## Wrench & Fastener Size Guide

				
1/4" Bolt or Nut Wrench—7/16"	5/16" Bolt or Nut Wrench—1/2"	3/8" Bolt or Nut Wrench—9/16"	7/16" Bolt or Nut Wrench (Bolt)—5/8" Wrench (Nut)—11/16"	1/2" Bolt or Nut Wrench—3/4"
M6 Bolt or Nut Wrench—10mm	M8 Bolt or Nut Wrench—13mm	M10 Bolt or Nut Wrench—17mm	M12 Bolt or Nut Wrench—19mm	M14 Bolt or Nut Wrench—22mm

Not for  
Reproduction

**IT IS THE POLICY OF BRIGGS & STRATTON CORP. TO IMPROVE ITS PRODUCTS  
WHENEVER IT IS POSSIBLE AND PRACTICAL TO DO SO. WE RESERVE THE RIGHT TO  
MAKE CHANGES OR ADD IMPROVEMENTS AT ANY TIME WITHOUT INCURRING ANY  
OBLIGATION TO MAKE SUCH CHANGES ON PRODUCTS.**

**Briggs & Stratton Yard Power Products Group**

---

3515 N. 124 Street / PO Box 702  
Wauwatosa, WI 53222 USA

[www.simplicitymfg.com](http://www.simplicitymfg.com)

© Copyright 2015 by Briggs & Stratton Corporation  
Milwaukee, WI, USA. All rights reserved

